

# The Breakers

*Paradise Tower Resort*



# The Breakers

## Paradise Tower Resort

sales & marketing by:



2006 N. Ocean Boulevard, Myrtle Beach, SC

toll free: 800-458-7890  
local: 843-390-8900

### **The Paradise Tower At Breakers Resort Opened March, 2002**

The Breakers Resort, with famous hotel traditions since the early 1930s, "broke" new ground when it opened a new condominium tower at 21st Avenue instead of another hotel. Purchasers have all the benefits of condo ownership plus all the hotel management expertise of the Breakers team.

This oceanfront condominium enjoys all the benefits of the 21st Avenue North Planned Unit Development (PUD) — a joint project between the City of Myrtle Beach and area property owners. As a result of the PUD, The Paradise Tower at Breakers Resort rises 20 stories high and features a selection of fully furnished studio, one, two and three bedroom condominiums.

The building combines Mediterranean and Traditional styling including roof top cupolas. There are glass enclosed exterior hallways, exercise room, game room, restaurants and lounges, conference facilities, commercial shops, on-site guest services plus one of the most impressive water parks available on the oceanfront and a parking structure so architecturally striking that it rivals many hotel and condominium properties on the Strand.

With the nearby Convention Center and Broadway At the Beach retail/entertainment complex and pedestrian streetscape amenities, this area has become the benchmark for new development in the City. Pre-construction sales set a record when offered by The Hoffman Group, Inc. in 2001. Resale values continue to increase proving the Myrtle Beach oceanfront condominium market is an incredible value!

Contact The Hoffman Group at 1-800-458-7890 or 843-692-3333 to learn how to become an owner at the new Paradise Tower at Breakers Resort.

All renderings, maps, landscaping, elevations, and plans are artist's conceptions. They are not to scale and are not guaranteed. The developer/builder reserves the right in its sole discretion to make changes or modifications to maps, plans, specifications, materials, features and colors without notice.

[www.oceaninvestments.com](http://www.oceaninvestments.com)



# The Breakers

## Paradise Tower Resort

sales & marketing by:

  
thehoffmangroup  
OCEANFRONT PROPERTY SPECIALISTS

toll free: 800-458-7890

local: 843-390-8900

### Amenities



All renderings, maps, landscaping, elevations, and plans are artist's conceptions. They are not to scale and are not guaranteed. The developer/builder reserves the right in its sole discretion to make changes or modifications to maps, plans, specifications, materials, features and colors without notice.

[www.oceaninvestments.com](http://www.oceaninvestments.com)



# The Breakers

## Paradise Tower Resort

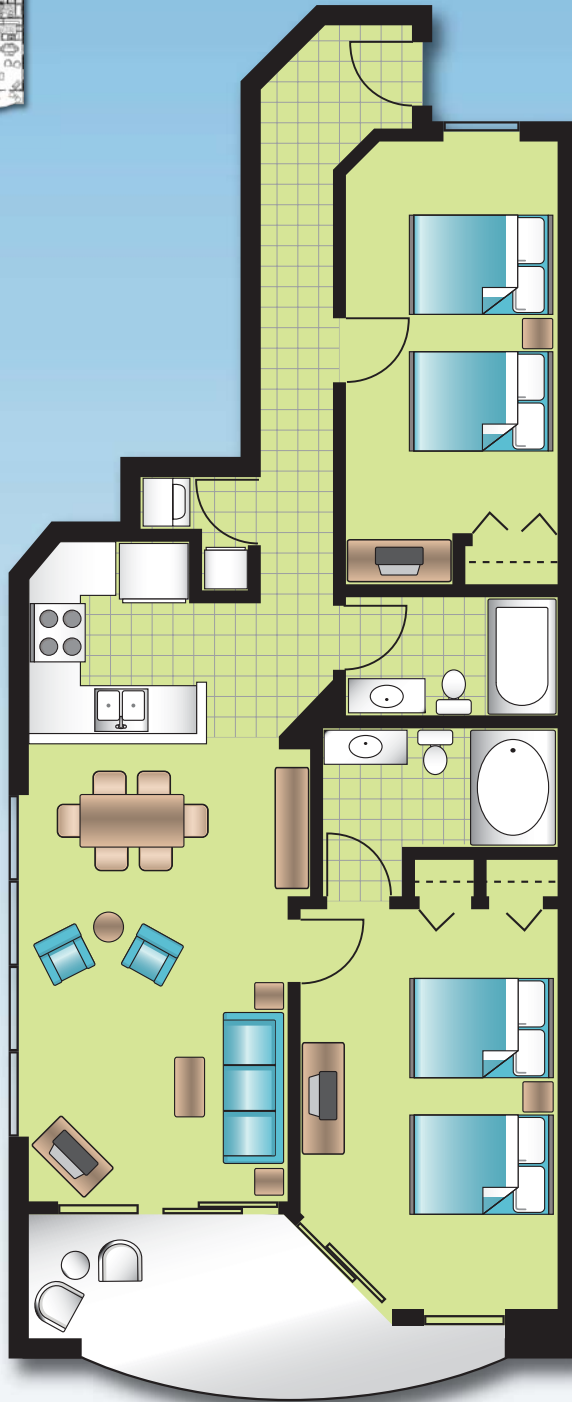
sales & marketing by:

  
thehoffmangroup  
OCEANFRONT PROPERTY SPECIALISTS

toll free: 800-458-7890  
local: 843-390-8900



2 BEDROOM  
1043 HSF;  
Balcony 124 SF



All renderings, maps, landscaping, elevations, and plans are artist's conceptions. They are not to scale and are not guaranteed. The developer/builder reserves the right in its sole discretion to make changes or modifications to maps, plans, specifications, materials, features and colors without notice.

[www.oceaninvestments.com](http://www.oceaninvestments.com)



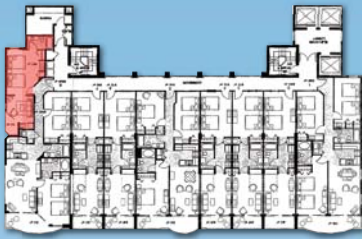
# The Breakers

## Paradise Tower Resort

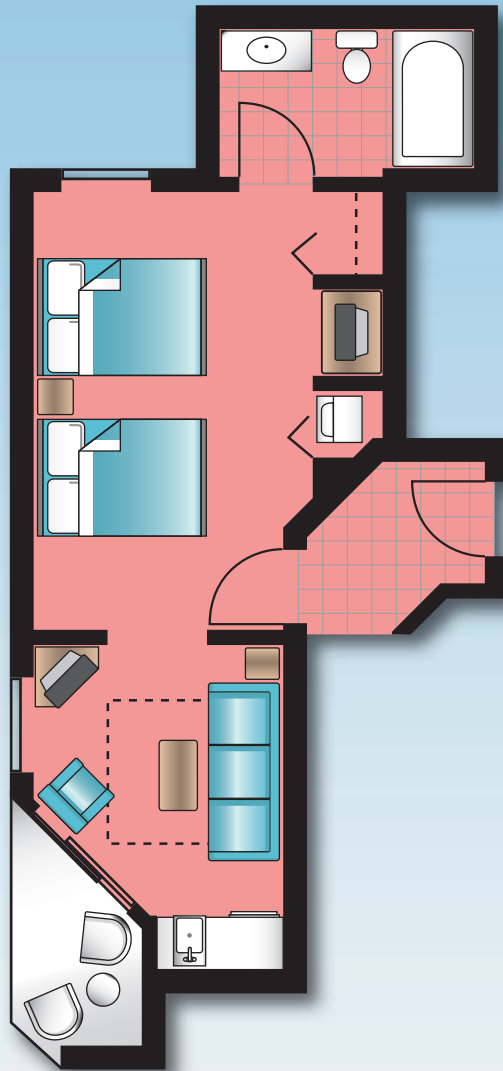
sales & marketing by:

  
thehoffmangroup  
OCEANFRONT PROPERTY SPECIALISTS

toll free: 800-458-7890  
local: 843-390-8900



OCEANVIEW SUITE  
457 HSF;  
Balcony 24 SF



All renderings, maps, landscaping, elevations, and plans are artist's conceptions. They are not to scale and are not guaranteed. The developer/builder reserves the right in its sole discretion to make changes or modifications to maps, plans, specifications, materials, features and colors without notice.

[www.oceaninvestments.com](http://www.oceaninvestments.com)



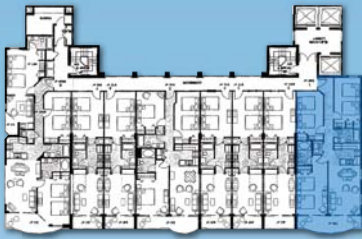
# The Breakers

## Paradise Tower Resort

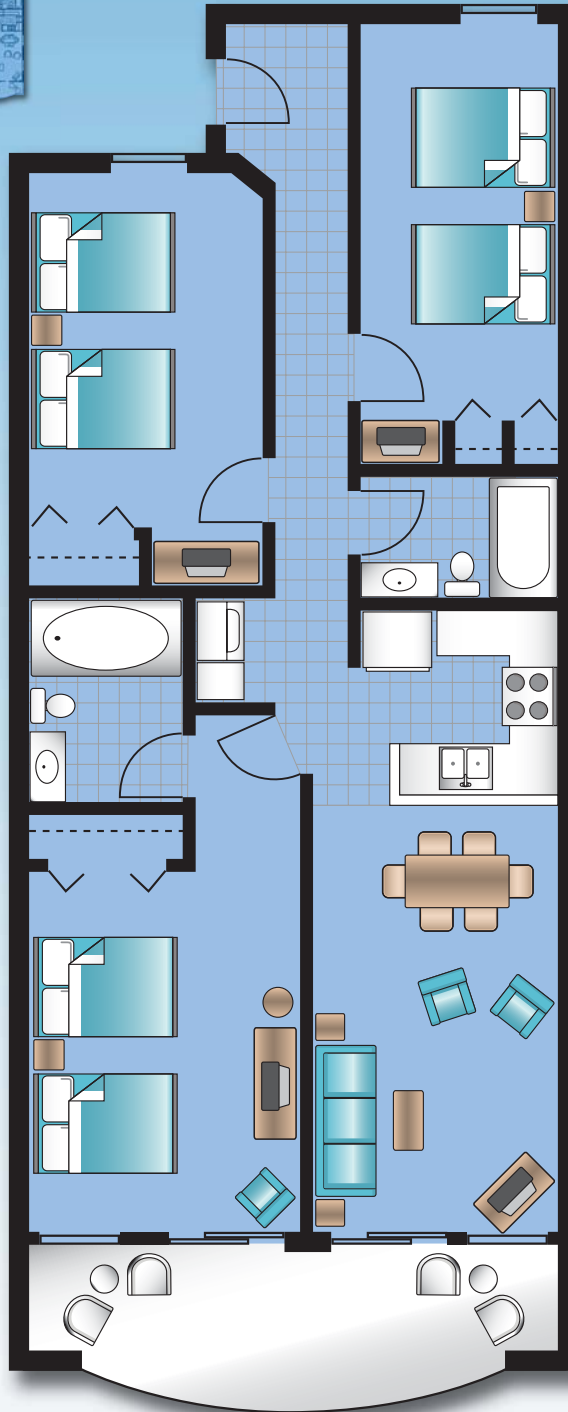
sales & marketing by:

  
thehoffmangroup  
OCEANFRONT PROPERTY SPECIALISTS

toll free: 800-458-7890  
local: 843-390-8900



3 BEDROOM END  
1282 HSF;  
Balcony 145 SF



All renderings, maps, landscaping, elevations, and plans are artist's conceptions. They are not to scale and are not guaranteed. The developer/builder reserves the right in its sole discretion to make changes or modifications to maps, plans, specifications, materials, features and colors without notice.

[www.oceaninvestments.com](http://www.oceaninvestments.com)



# The Breakers

## Paradise Tower Resort

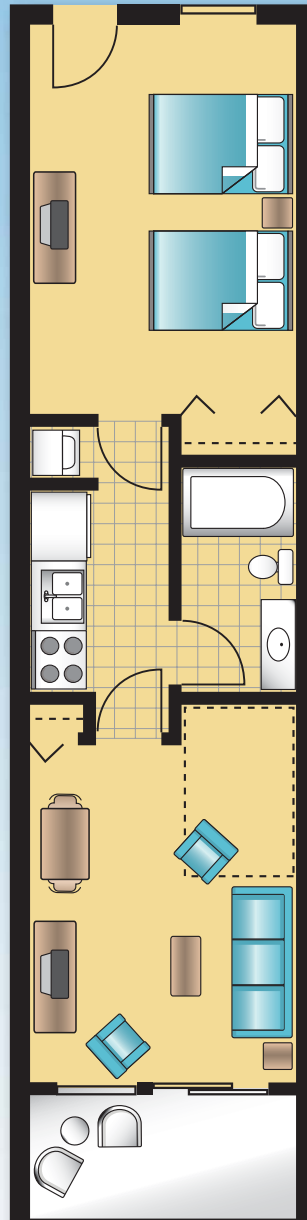
sales & marketing by:



toll free: 800-458-7890  
local: 843-390-8900



1 BEDROOM  
572 HSF;  
Balcony 60 SF



All renderings, maps, landscaping, elevations, and plans are artist's conceptions. They are not to scale and are not guaranteed. The developer/builder reserves the right in its sole discretion to make changes or modifications to maps, plans, specifications, materials, features and colors without notice.

[www.oceaninvestments.com](http://www.oceaninvestments.com)



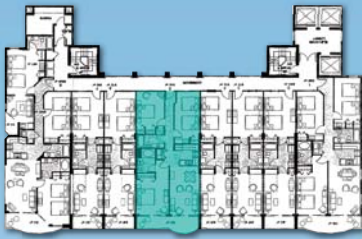
# The Breakers

## Paradise Tower Resort

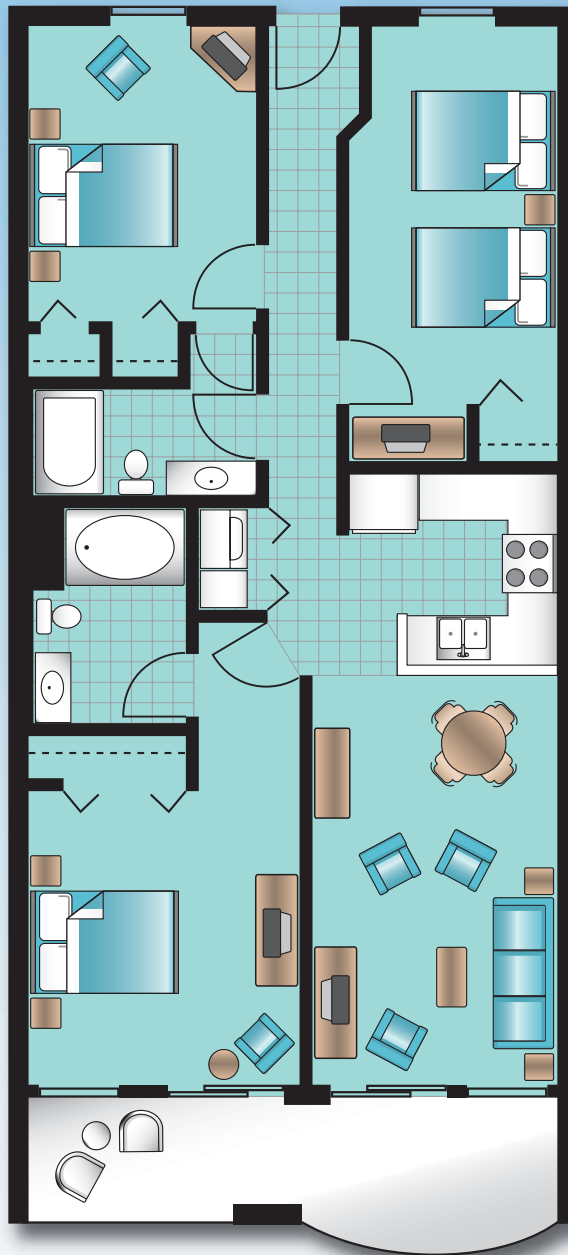
sales & marketing by:

  
thehoffmangroup  
OCEANFRONT PROPERTY SPECIALISTS

toll free: 800-458-7890  
local: 843-390-8900



3 BEDROOM  
1143 HSF;  
Balcony 133 SF



All renderings, maps, landscaping, elevations, and plans are artist's conceptions. They are not to scale and are not guaranteed. The developer/builder reserves the right in its sole discretion to make changes or modifications to maps, plans, specifications, materials, features and colors without notice.

[www.oceaninvestments.com](http://www.oceaninvestments.com)

