



Bay Watch

RESORT & CONFERENCE CENTER



Bay Watch Resort & Conference Center

Phase II, 187 units -- Opened April, 2002

Situated on over three acres of land in the Crescent Beach section of North Myrtle Beach, the Bay Watch Resort enjoys more than six hundred feet of frontage on the Atlantic Ocean providing spectacular views, north, south and east! Because the site is the only remaining property of such magnitude in North Myrtle Beach, the city allowed the resort development team to create a P.U.D. (Planned Unit Development). This partnership means that in addition to oceanfront condominium units, the Bay Watch Resort includes commercial facilities and amenities unparalleled in the North Myrtle Beach market.

The Resort's P.U.D. called for three phases: Tower North with 170 units replaced the former Bay Watch Inn and opened on March 15, 2001. Tower South with 187 units opened in late spring, 2002. It replaced the southern portion of the North Myrtle Beach Holiday Inn Hotel. Tower Central with 166 units replaced the remaining part of the Holiday Inn. Opened on June 26, 2003, this phase includes all new registration reception/lobby, full-service restaurant, lounge, and conference facilities to cater to the growing market of medium-sized national and regional conventions.

The Bay Watch Resort's other facilities include covered parking, convenience store, exercise center, game rooms, laundry facilities, plus indoor and outdoor swimming pools, lazy rivers, tot pools and whirlpool tubs set in an attractive and extensive tropical gardens oceanfront environment. The Bay Watch Resort offers one of the most diversified portfolio of floor plans available on the Grand Strand. Tower North features nine different floor plans in its 170 units. Tower South's 187 units offer 11 styles. For Tower Central's 166 units, the developer opted for fewer units with larger square footages. Each of the six styles offers exceptional features including interiors designed by Resort Interiors featuring furniture from Kimball Lodging Group, complete housewares and accessories packages, extended tile throughout each unit's foyer, hallway, kitchen and bath, central heat and air and oceanfront balconies. In addition, all one, two and three bedroom units feature dishwashers and washer/dryer units.

The Hoffman Group is maintaining an on-site sales office for re-sale opportunities. Call your sales associate today or visit our office just off the registration lobby to join the satisfied family of Bay Watch Resort owners!

toll free: 800-458-7890 • www.oceaninvestments.com • local: 843-390-8900



toll free: 800-458-7890 • www.oceaninvestments.com • local: 843-390-8900

All renderings, maps, landscaping, elevations, and plans are artist's conceptions. They are not to scale and are not guaranteed. The developer/builder reserves the right in its sole discretion to make changes or modifications to maps, plans, specifications, materials, features and colors without notice

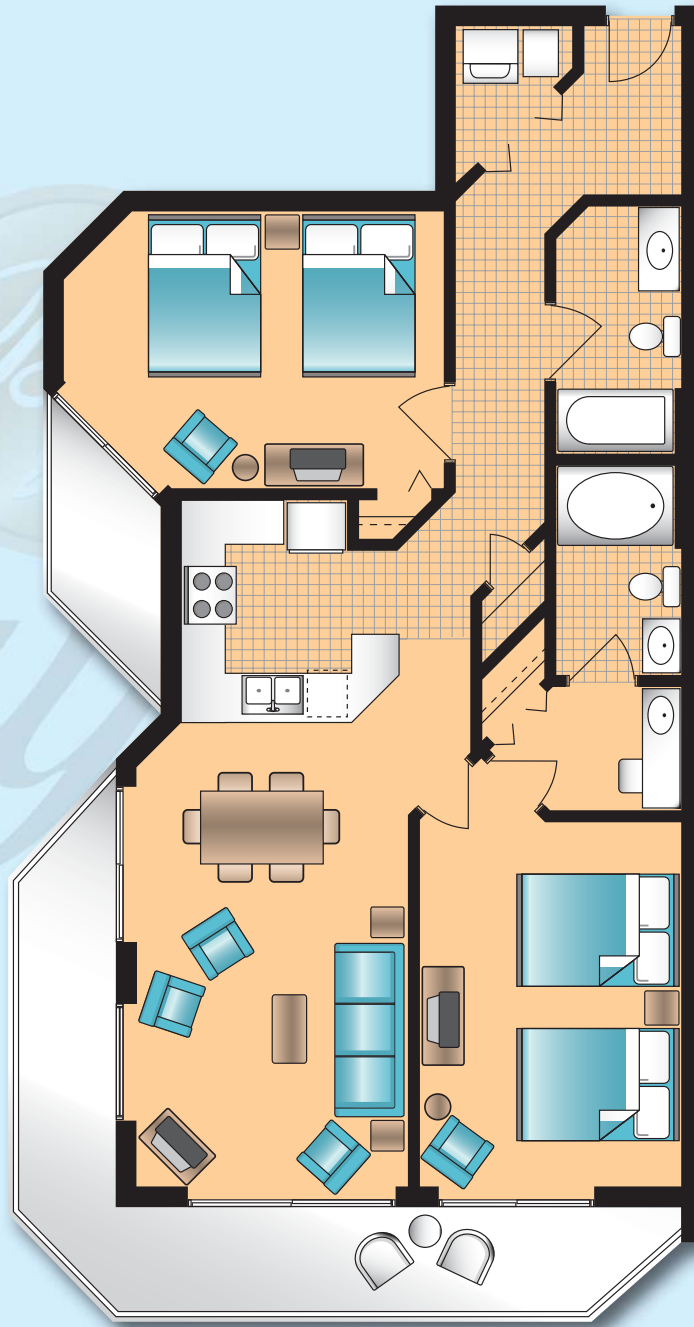
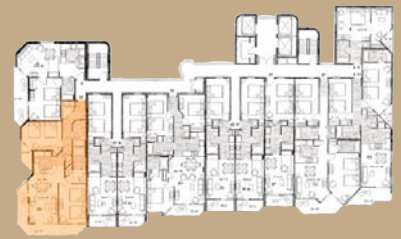


sales & marketing by:



toll free: 800-458-7890 • www.oceaninvestments.com • local: 843-390-8900

All renderings, maps, landscaping, elevations, and plans are artist's conceptions. They are not to scale and are not guaranteed. The developer/builder reserves the right in its sole discretion to make changes or modifications to maps, plans, specifications, materials, features and colors without notice

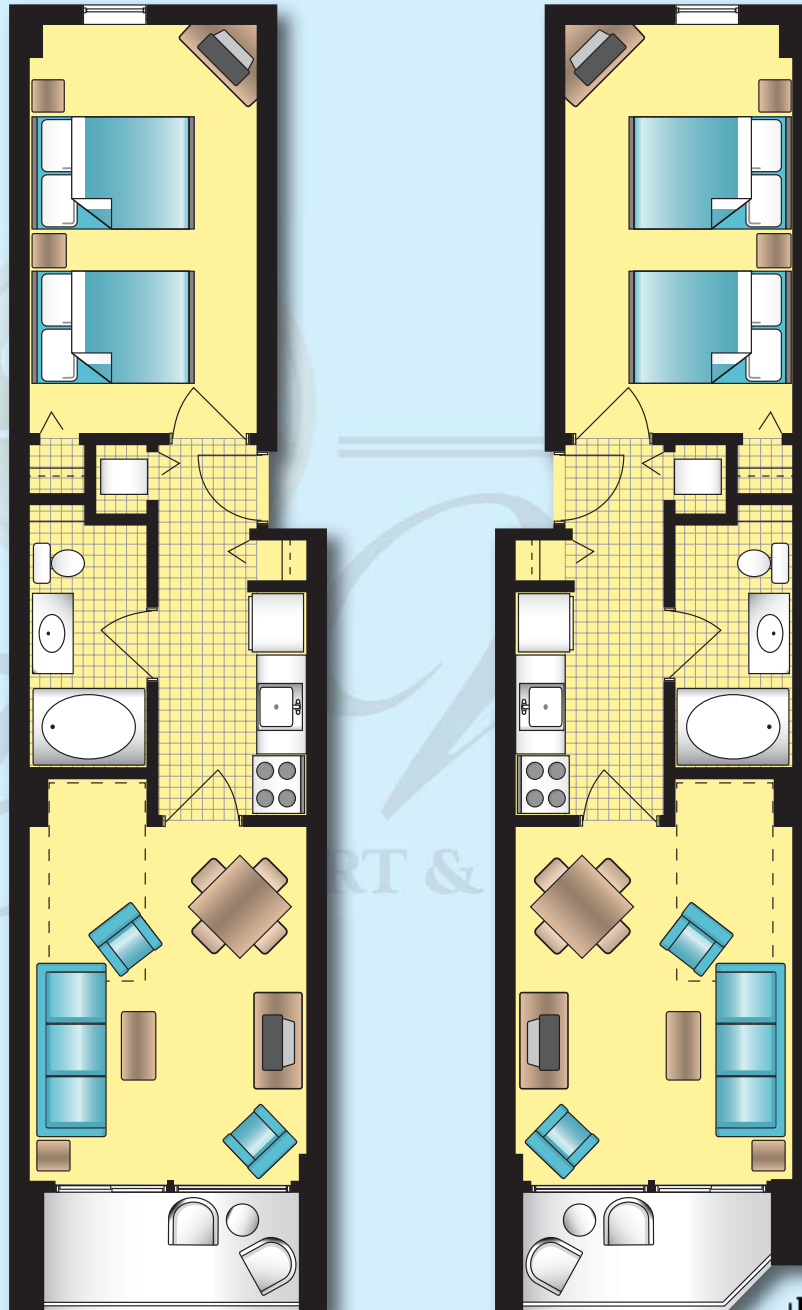


sales & marketing by:



toll free: 800-458-7890 • www.oceaninvestments.com • local: 843-390-8900

All renderings, maps, landscaping, elevations, and plans are artist's conceptions. They are not to scale and are not guaranteed. The developer/builder reserves the right in its sole discretion to make changes or modifications to maps, plans, specifications, materials, features and colors without notice

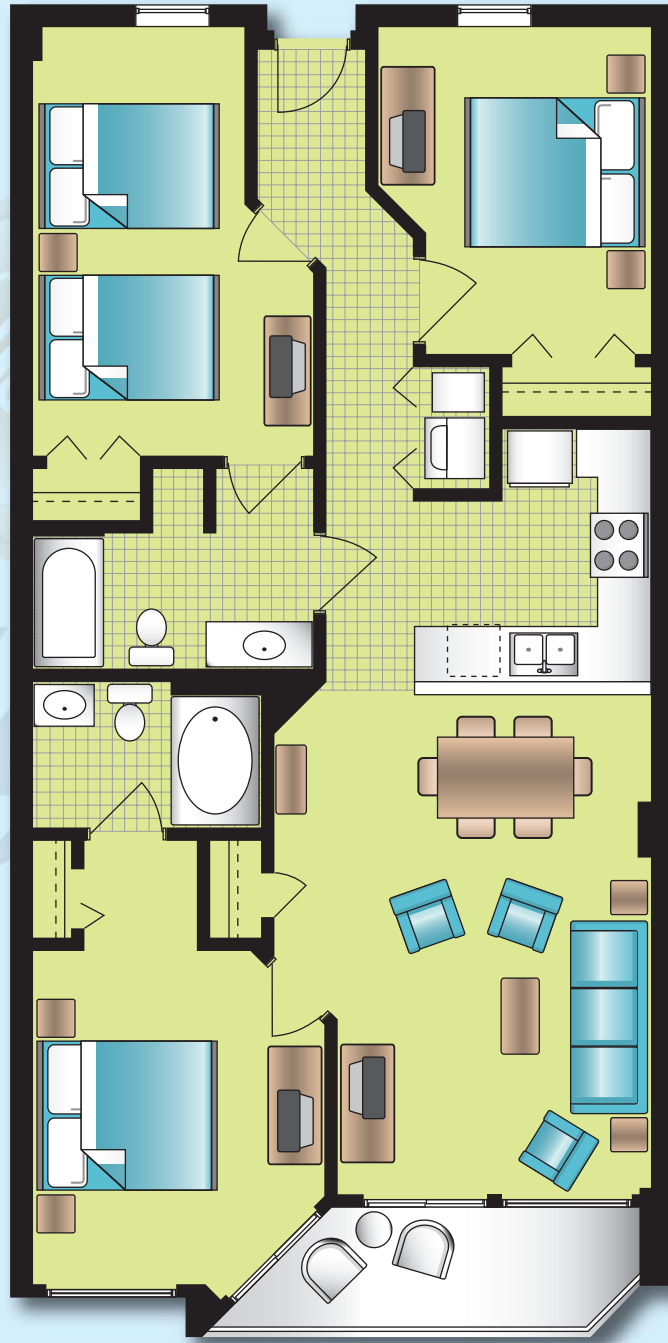


sales & marketing by:



toll free: 800-458-7890 • www.oceaninvestments.com • local: 843-390-8900

All renderings, maps, landscaping, elevations, and plans are artist's conceptions. They are not to scale and are not guaranteed. The developer/builder reserves the right in its sole discretion to make changes or modifications to maps, plans, specifications, materials, features and colors without notice.

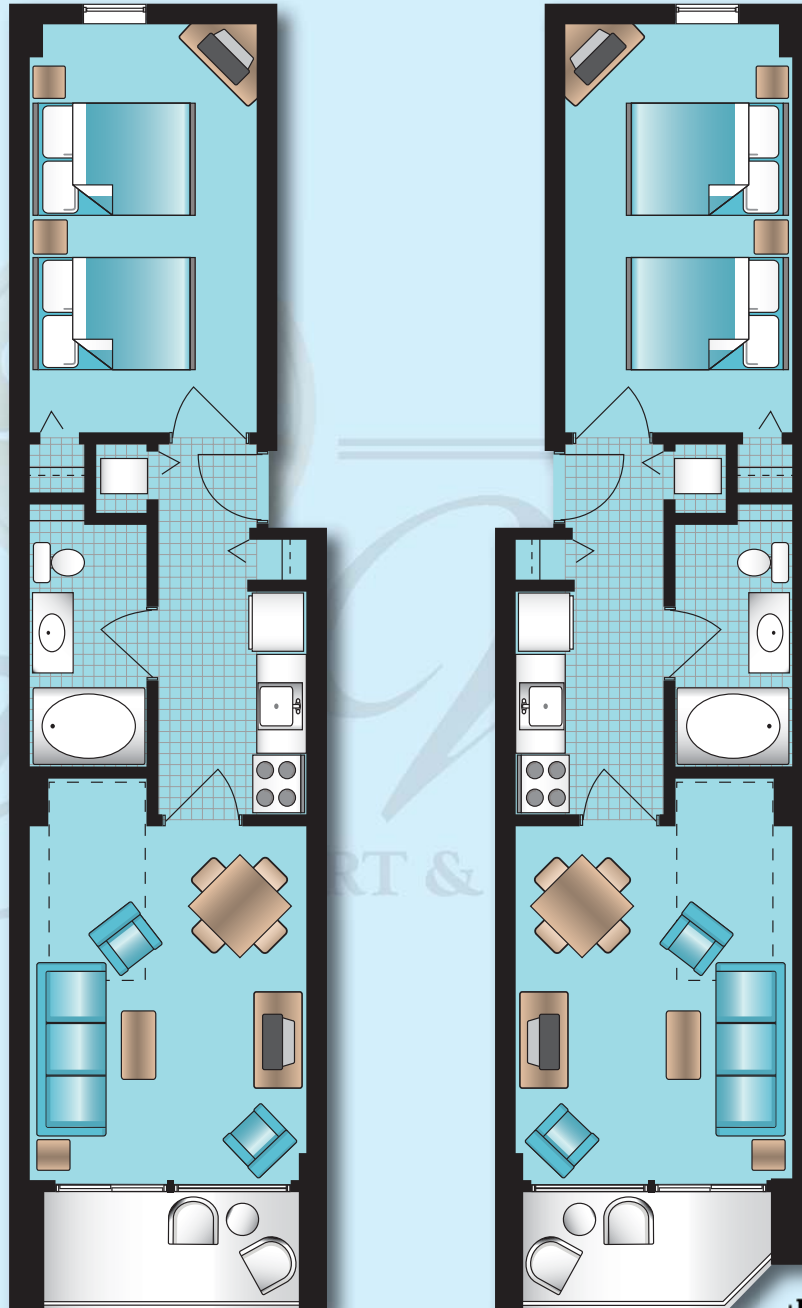
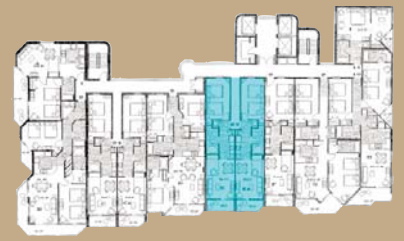


sales & marketing by:



toll free: 800-458-7890 • www.oceaninvestments.com • local: 843-390-8900

All renderings, maps, landscaping, elevations, and plans are artist's conceptions. They are not to scale and are not guaranteed. The developer/builder reserves the right in its sole discretion to make changes or modifications to maps, plans, specifications, materials, features and colors without notice.

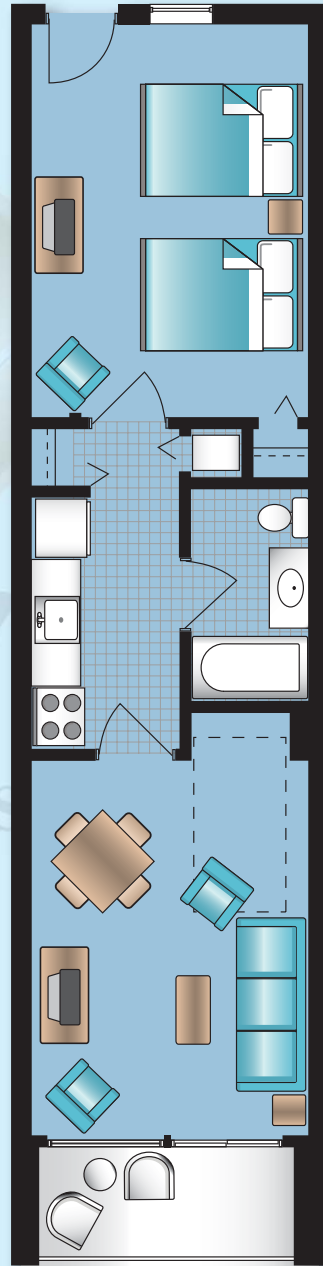


sales & marketing by:



toll free: 800-458-7890 • www.oceaninvestments.com • local: 843-390-8900

All renderings, maps, landscaping, elevations, and plans are artist's conceptions. They are not to scale and are not guaranteed. The developer/builder reserves the right in its sole discretion to make changes or modifications to maps, plans, specifications, materials, features and colors without notice.

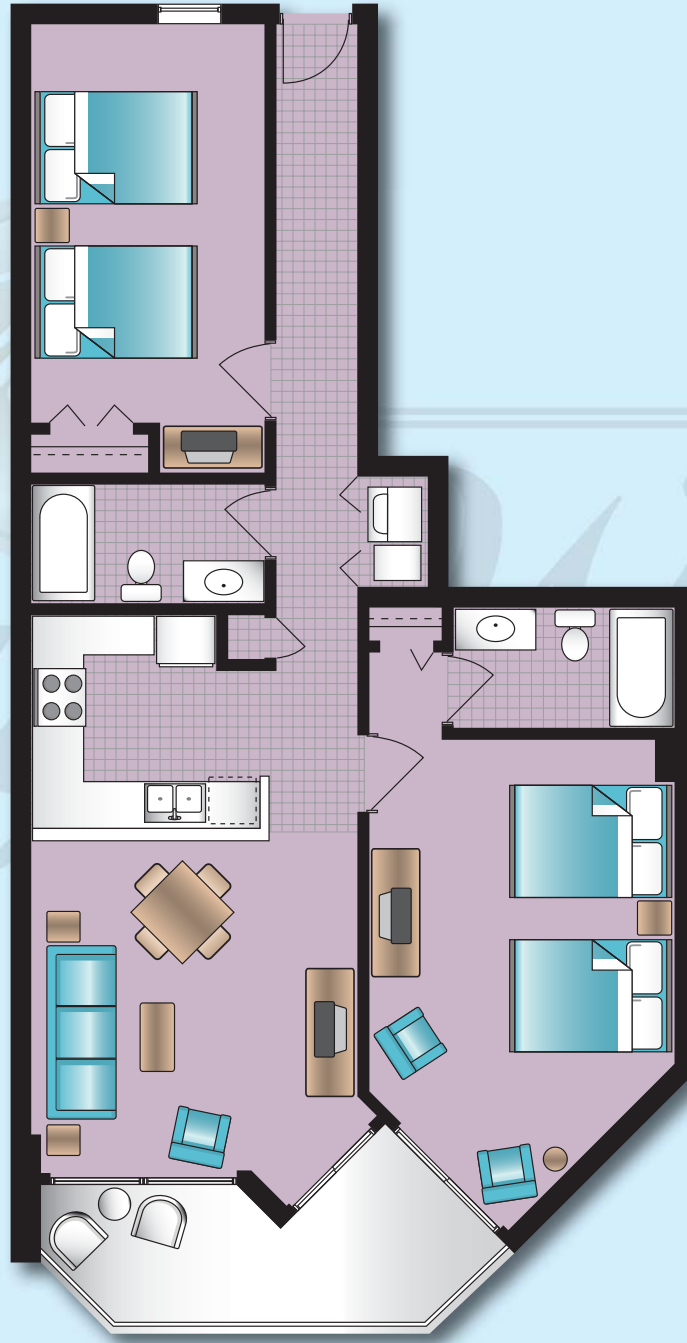


sales & marketing by:



toll free: 800-458-7890 • www.oceaninvestments.com • local: 843-390-8900

All renderings, maps, landscaping, elevations, and plans are artist's conceptions. They are not to scale and are not guaranteed. The developer/builder reserves the right in its sole discretion to make changes or modifications to maps, plans, specifications, materials, features and colors without notice.

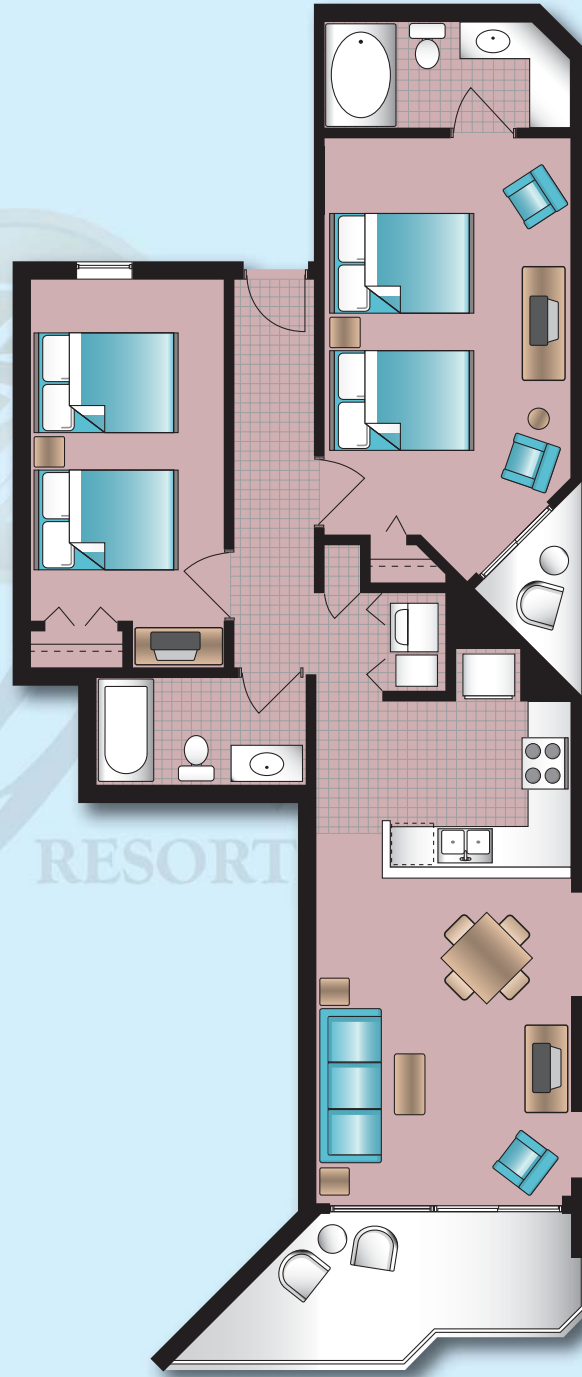


sales & marketing by:



toll free: 800-458-7890 • www.oceaninvestments.com • local: 843-390-8900

All renderings, maps, landscaping, elevations, and plans are artist's conceptions. They are not to scale and are not guaranteed. The developer/builder reserves the right in its sole discretion to make changes or modifications to maps, plans, specifications, materials, features and colors without notice

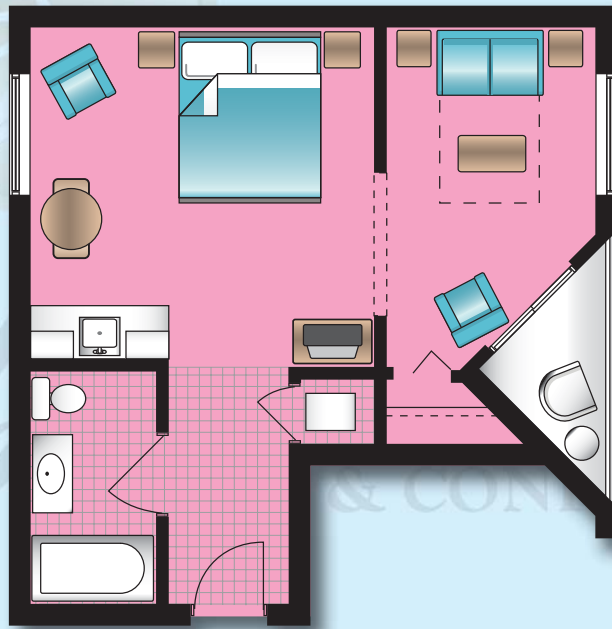
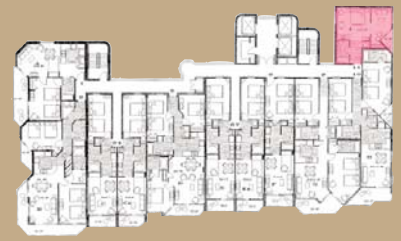


sales & marketing by:



toll free: 800-458-7890 • www.oceaninvestments.com • local: 843-390-8900

All renderings, maps, landscaping, elevations, and plans are artist's conceptions. They are not to scale and are not guaranteed. The developer/builder reserves the right in its sole discretion to make changes or modifications to maps, plans, specifications, materials, features and colors without notice



sales & marketing by:



toll free: 800-458-7890 • www.oceaninvestments.com • local: 843-390-8900

All renderings, maps, landscaping, elevations, and plans are artist's conceptions. They are not to scale and are not guaranteed. The developer/builder reserves the right in its sole discretion to make changes or modifications to maps, plans, specifications, materials, features and colors without notice