



Avista

RESORT



sales & marketing by:



thehoffmangroup

OCEANFRONT PROPERTY SPECIALISTS

www.oceaninvestments.com

toll free: 800-458-7890

local: 843-390-8900



PHASE 1
OPENED FEBRUARY, 2005

PHASE 2
OPENED JUNE, 2005

Adjacent to an exclusive residential area in the northern part of North Myrtle Beach, the Avista Resort was granted a Planned Unit Development (PUD) zoning designation to provide space for the twin-tower oceanfront condominium resort. Developer brothers Chris and Casey Shroff employed Mozingo + Wallace Architects, LLP, one of the most innovative architectural firms on the Grand Strand, to create what has become one of the most stunning properties in North Myrtle Beach!

Built in two oceanfront phases, the 16-story buildings arc to create a semicircle facing the ocean. The 5-story centerpiece connector houses the art deco lobby and registration area, convention and meeting facilities, full-service restaurant, lounge and fitness center. Spectacular year-round water amenities include pools, spas, lazy rivers and a large landscaped deck.

Phase I offers 145 oceanfront units and 48 oceanview units. Phase II offers 145 oceanfront units and 39 oceanview units. Individual units are designed to "fan" out from the curved balcony to provide architecturally exciting and varied floor plans. Sizes range from the spacious 497 sq. ft. suite to the 1446 sq. ft. luxurious oceanfront 3-bedroom. The top two floors are penthouse levels featuring 9 ft. ceilings. Each unit offers exceptional features including fully furnished and accessorized designer interiors; tiled entry, hallway, kitchen and baths; central heat and air and private curved balcony. All units include appliances and the 1, 2, and 3 bedroom units also include washer/dryer.

The Grand Strand area continues to be one of the top family resort destinations in the country with prices still remaining well below those found in other markets. The Avista Resort ranks as a unique addition to the mix and has become highly popular with vacationers and owners alike.

The Hoffman Group maintains an on-site sales office at The Avista to accommodate previous purchasers wishing to list their condominium. Call today to learn about the available opportunities that will let you become an owner in this magnificent oceanfront resort!

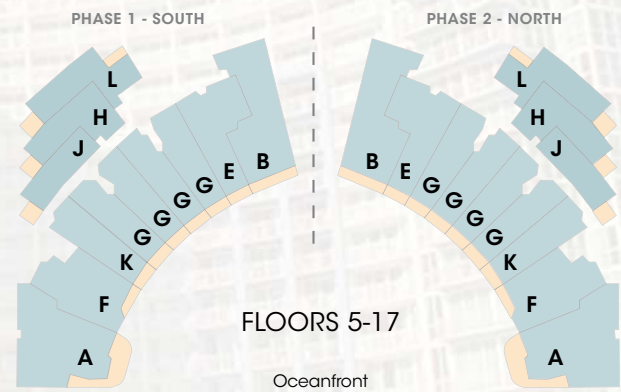
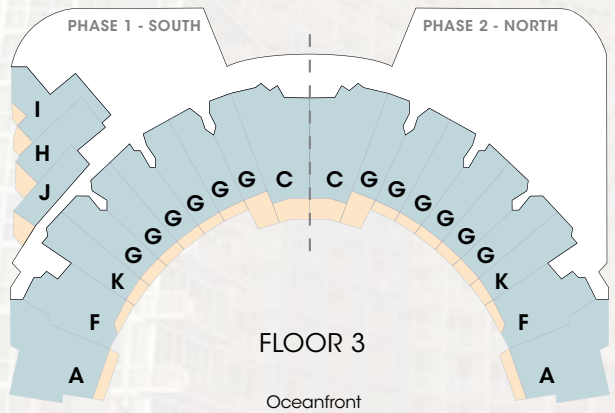
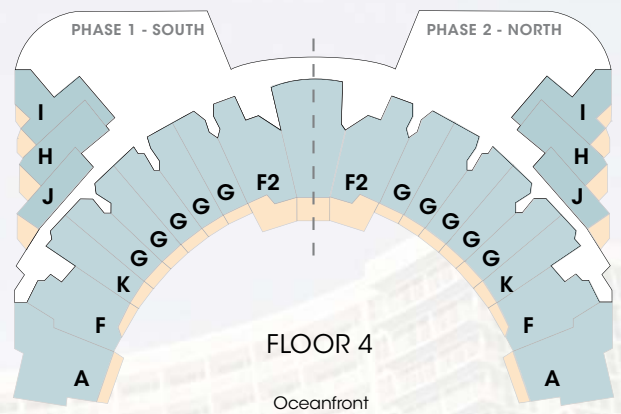
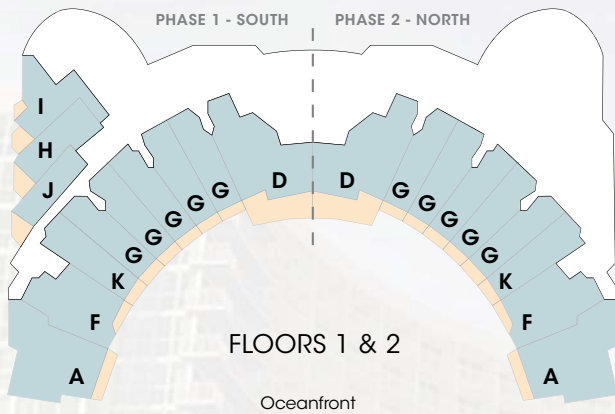
sales & marketing by:



2200 Premier Resorts Blvd, North Myrtle Beach SC 29582
toll free: 800-458-7890 local: 843-390-8900 fax: 877-302-8585
www.oceaninvestments.com



FLOORPLANS



sales & marketing by:



www.oceaninvestments.com

toll free: 800-458-7890

local: 843-390-8900

All renderings, maps, landscaping, elevations, and plans are artist's conceptions. They are not to scale and are not guaranteed. The developer/builder reserves the right in its sole discretion to make changes or modifications to maps, plans, specifications, materials, features and colors without notice.



PLAN A

Three Bedroom

Oceanfront

1446 Square Feet

118 Sq.Ft. Balcony

PHASE 1 PLAN
(PHASE 2 PLAN
IS REVERSED)



sales & marketing by:



www.oceaninvestments.com

toll free: 800-458-7890

local: 843-390-8900

All renderings, maps, landscaping, elevations, and plans are artist's conceptions. They are not to scale and are not guaranteed. The developer/builder reserves the right in its sole discretion to make changes or modifications to maps, plans, specifications, materials, features and colors without notice.



PLAN B

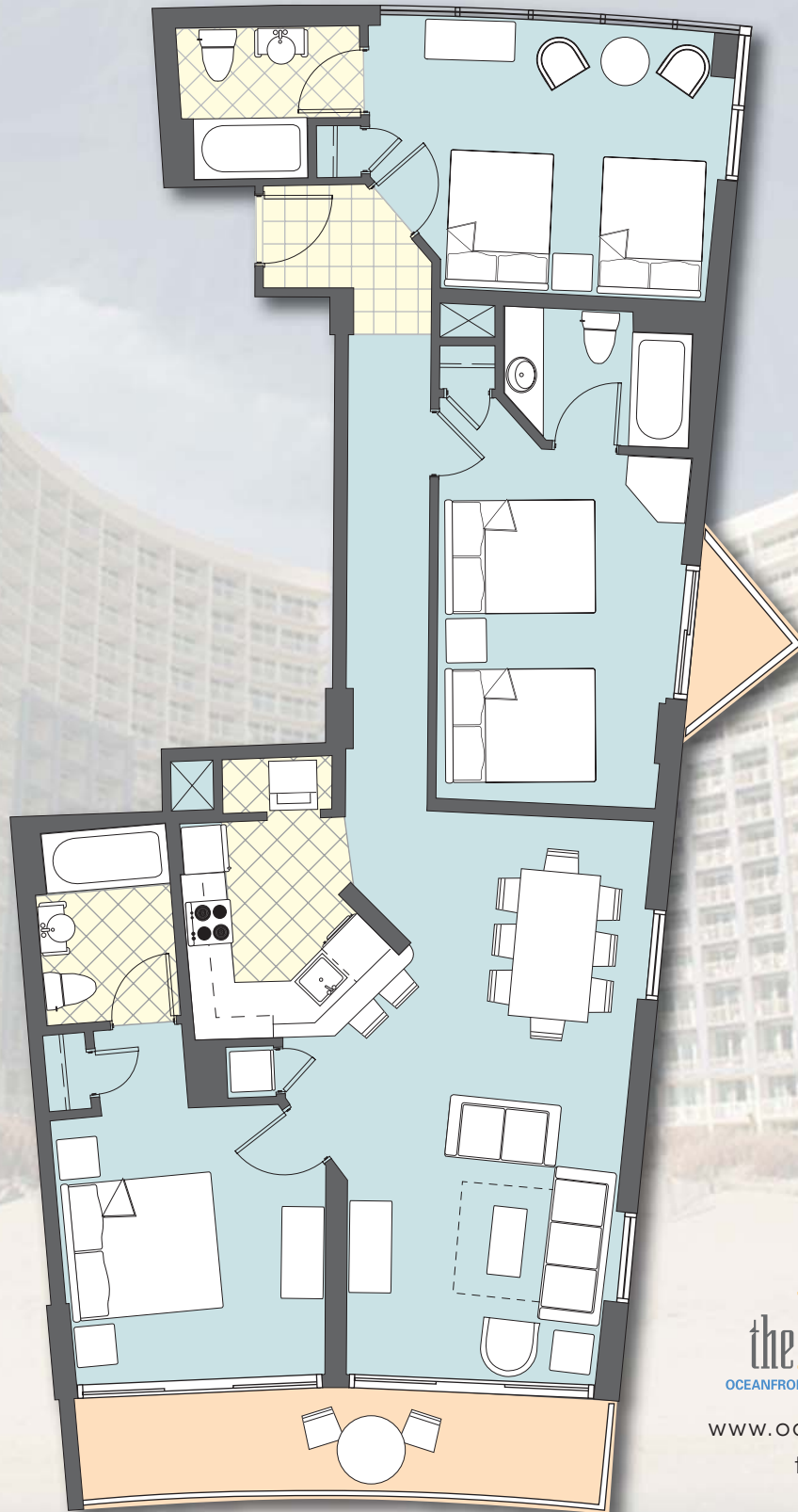
Three Bedroom

Oceanfront

1362 Square Feet

142 Sq.Ft. Balcony

PHASE 1 PLAN
(PHASE 2 PLAN
IS REVERSED)



sales & marketing by:



www.oceaninvestments.com

toll free: 800-458-7890

local: 843-390-8900

All renderings, maps, landscaping, elevations, and plans are artist's conceptions. They are not to scale and are not guaranteed. The developer/builder reserves the right in its sole discretion to make changes or modifications to maps, plans, specifications, materials, features and colors without notice.



PLAN C

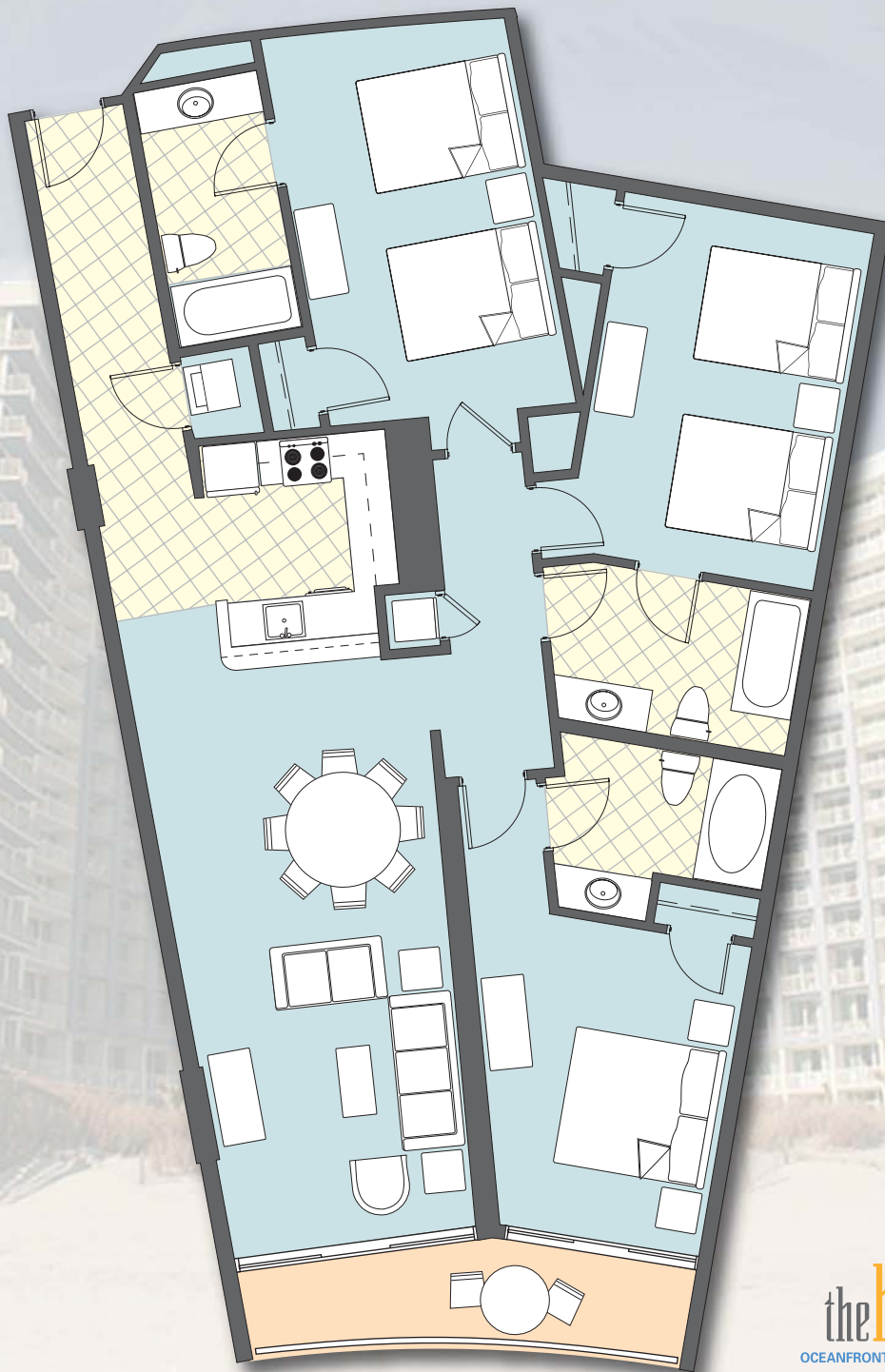
Three Bedroom

Oceanfront

1503 Square Feet

88 Sq.Ft. Balcony

PHASE 1 PLAN
(PHASE 2 PLAN
IS REVERSED)



sales & marketing by:



www.oceaninvestments.com

toll free: 800-458-7890

local: 843-390-8900

All renderings, maps, landscaping, elevations, and plans are artist's conceptions. They are not to scale and are not guaranteed. The developer/builder reserves the right in its sole discretion to make changes or modifications to maps, plans, specifications, materials, features and colors without notice.



PLAN D

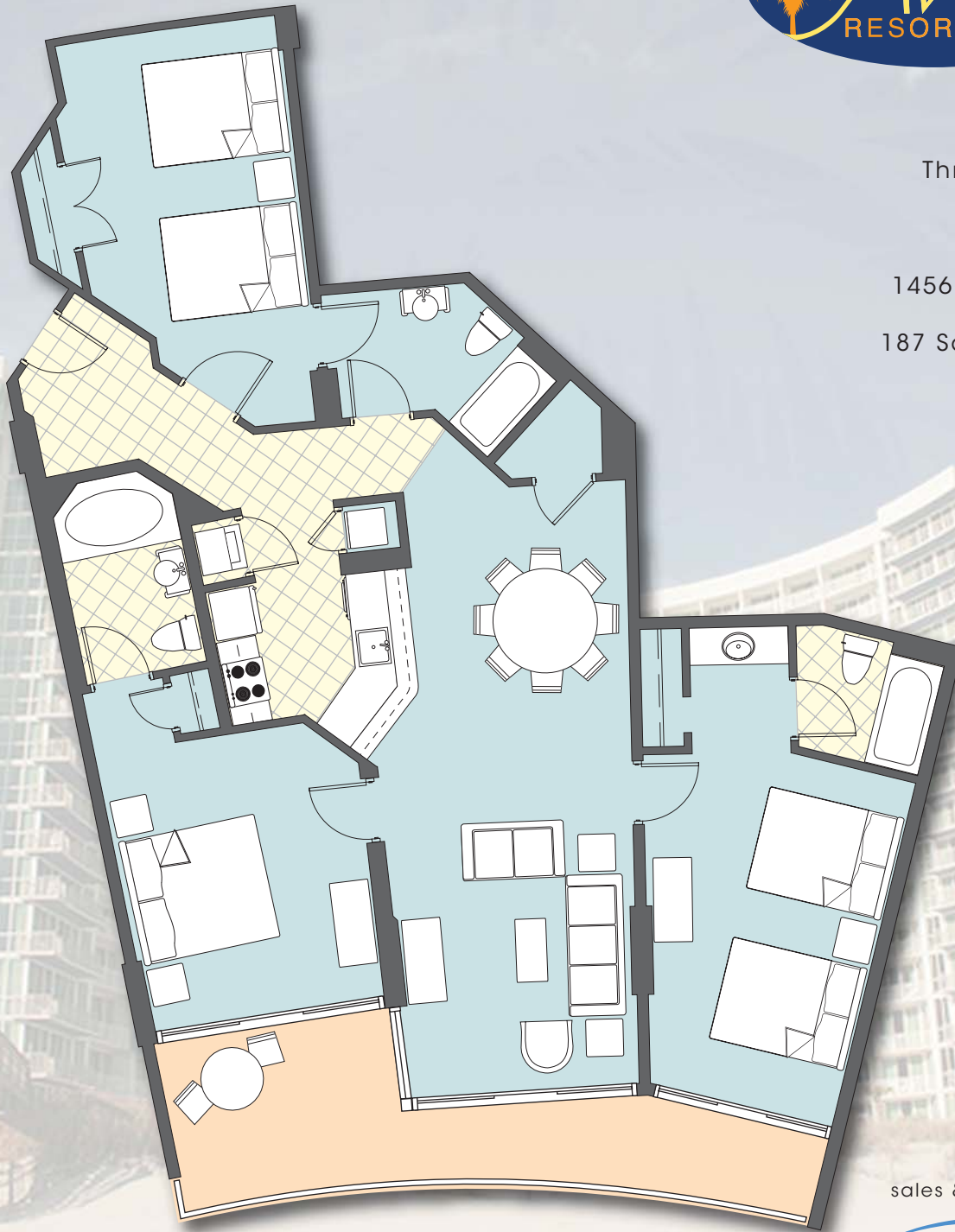
Three Bedroom

Oceanfront

1456 Square Feet

187 Sq.Ft. Balcony

PHASE 1 PLAN
(PHASE 2 PLAN
IS REVERSED)



sales & marketing by:



www.oceaninvestments.com

toll free: 800-458-7890

local: 843-390-8900

All renderings, maps, landscaping, elevations, and plans are artist's conceptions. They are not to scale and are not guaranteed. The developer/builder reserves the right in its sole discretion to make changes or modifications to maps, plans, specifications, materials, features and colors without notice.



PLAN E

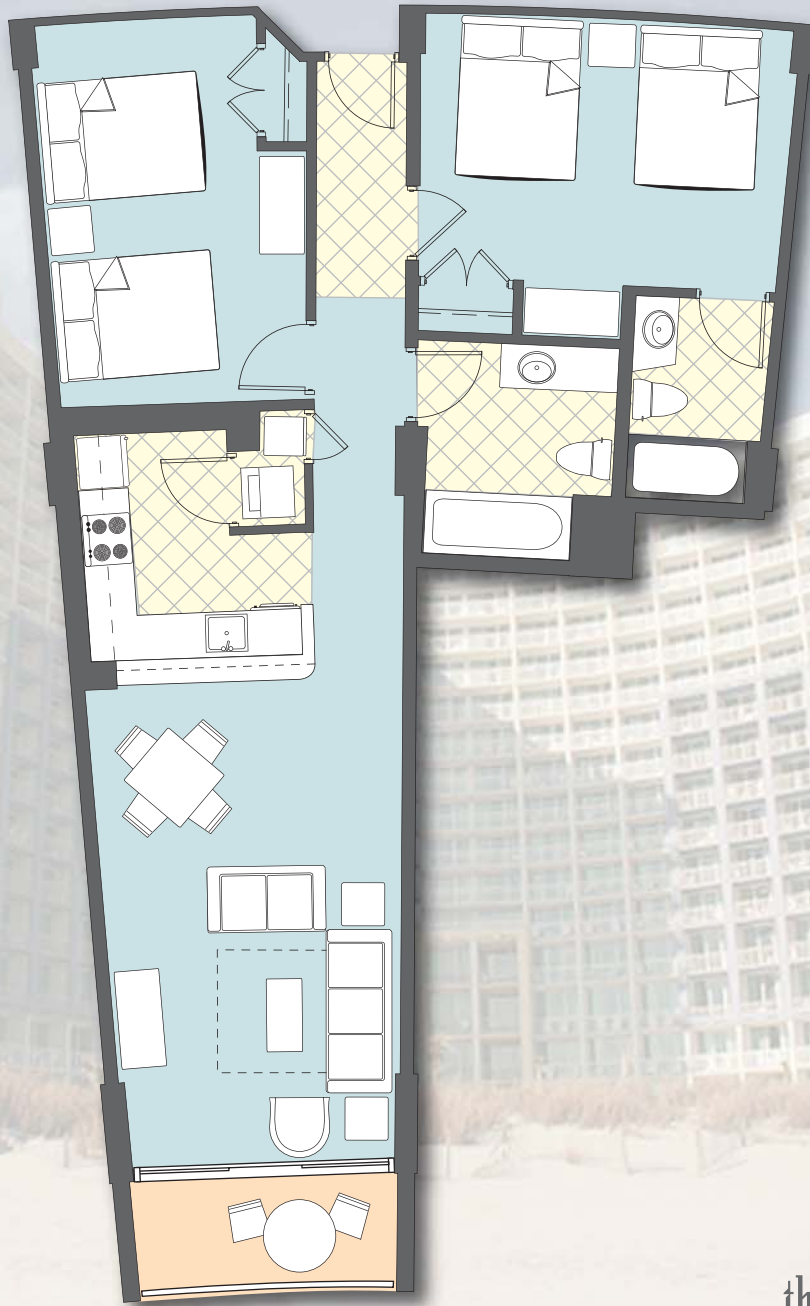
Two Bedroom

Oceanfront

1017 Square Feet

58 Sq.Ft. Balcony

PHASE 1 PLAN
(PHASE 2 PLAN
IS REVERSED)



sales & marketing by:



www.oceaninvestments.com

toll free: 800-458-7890

local: 843-390-8900

All renderings, maps, landscaping, elevations, and plans are artist's conceptions. They are not to scale and are not guaranteed. The developer/builder reserves the right in its sole discretion to make changes or modifications to maps, plans, specifications, materials, features and colors without notice.



PLAN F

Two Bedroom

Oceanfront

1030 Square Feet

70 Sq.Ft. Balcony

PHASE 1 PLAN
(PHASE 2 PLAN
IS REVERSED)



sales & marketing by:



www.oceaninvestments.com

toll free: 800-458-7890

local: 843-390-8900

All renderings, maps, landscaping, elevations, and plans are artist's conceptions. They are not to scale and are not guaranteed. The developer/builder reserves the right in its sole discretion to make changes or modifications to maps, plans, specifications, materials, features and colors without notice.



PLAN F2

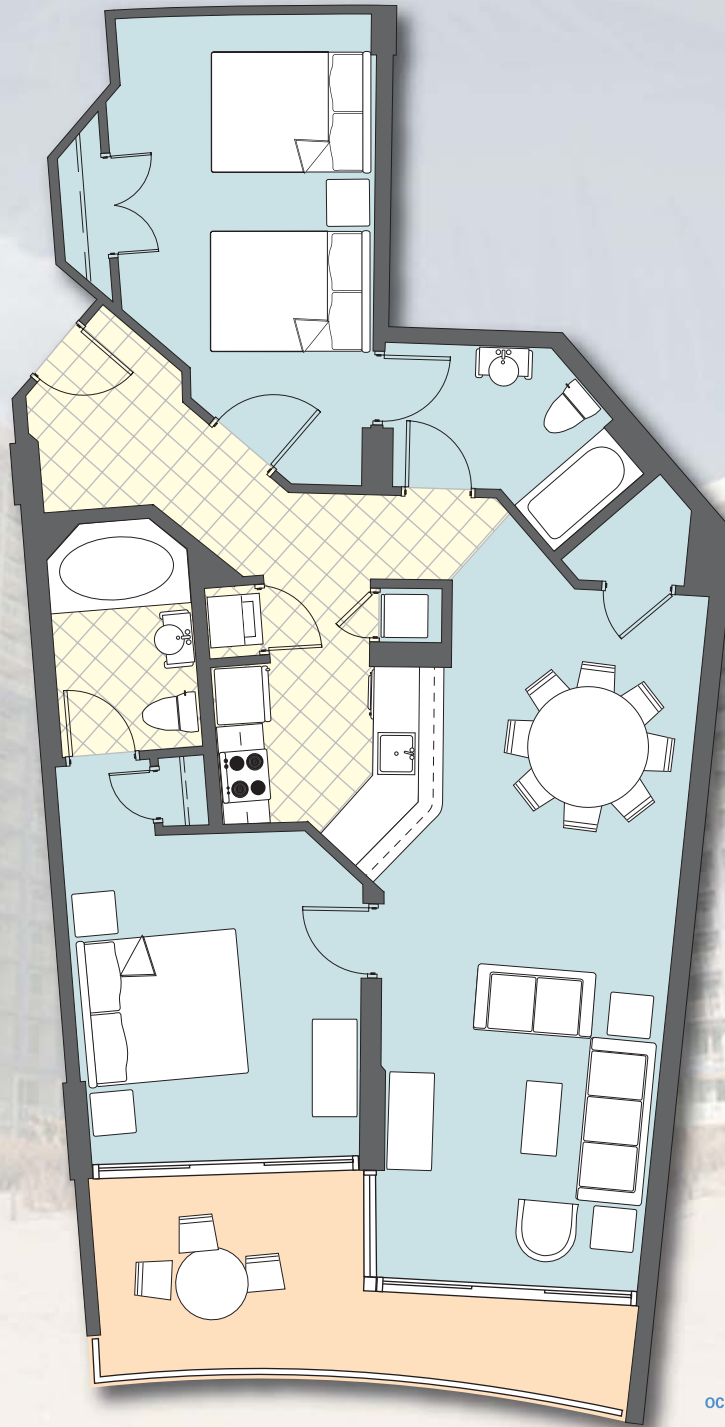
Two Bedroom

Oceanfront

1165 Square Feet

148 Sq.Ft. Balcony

PHASE 1 PLAN
(PHASE 2 PLAN
IS REVERSED)



sales & marketing by:



www.oceaninvestments.com

toll free: 800-458-7890

local: 843-390-8900

All renderings, maps, landscaping, elevations, and plans are artist's conceptions. They are not to scale and are not guaranteed. The developer/builder reserves the right in its sole discretion to make changes or modifications to maps, plans, specifications, materials, features and colors without notice.



PLAN G

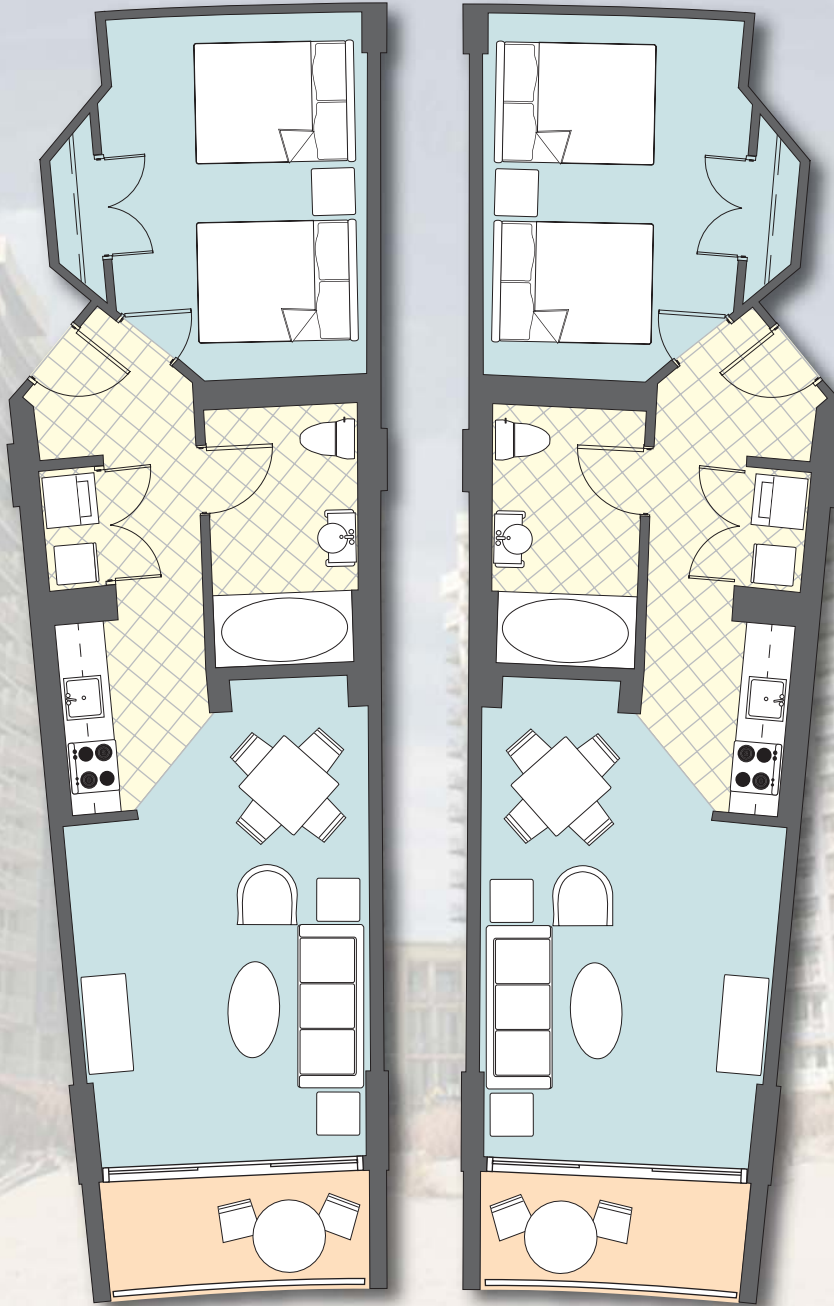
One Bedroom

Oceanfront

643 Square Feet

58 Sq.Ft. Balcony

PHASE 1 PLAN
(PHASE 2 PLAN
IS REVERSED)



Note: Units are available in both orientations.

sales & marketing by:



www.oceaninvestments.com

toll free: 800-458-7890

local: 843-390-8900

All renderings, maps, landscaping, elevations, and plans are artist's conceptions. They are not to scale and are not guaranteed. The developer/builder reserves the right in its sole discretion to make changes or modifications to maps, plans, specifications, materials, features and colors without notice.



PLAN H

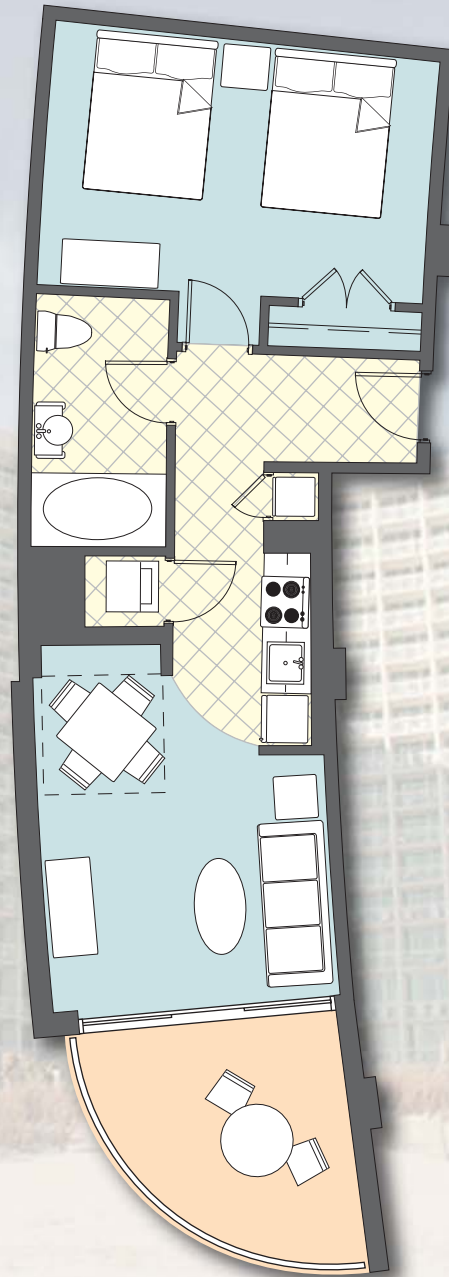
One Bedroom

Oceanview

604 Square Feet

102 Sq.Ft. Balcony

PHASE 1 PLAN
(PHASE 2 PLAN
IS REVERSED)



sales & marketing by:



www.oceaninvestments.com

toll free: 800-458-7890

local: 843-390-8900

All renderings, maps, landscaping, elevations, and plans are artist's conceptions. They are not to scale and are not guaranteed. The developer/builder reserves the right in its sole discretion to make changes or modifications to maps, plans, specifications, materials, features and colors without notice.



PLAN I

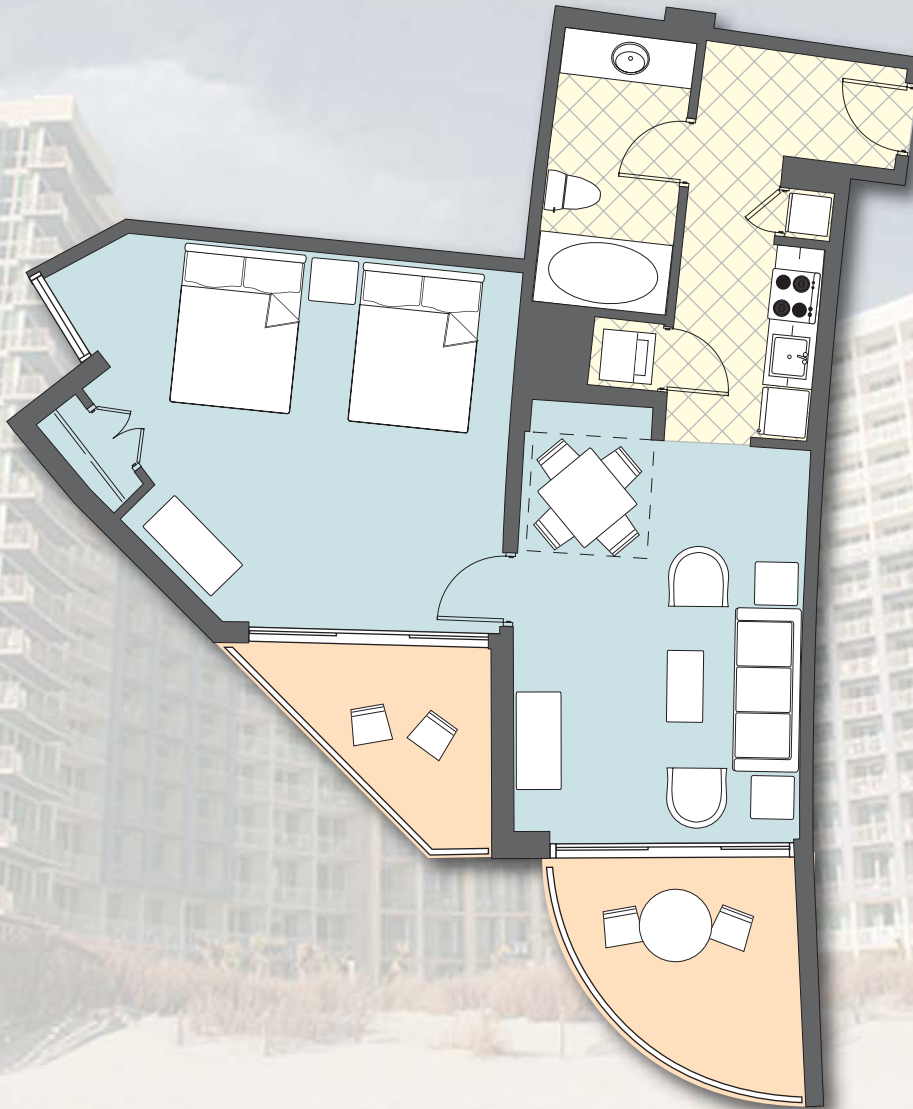
One Bedroom

Oceanview

745 Square Feet

165 Sq.Ft. Balcony

PHASE 1 PLAN
(PHASE 2 PLAN
IS REVERSED)



sales & marketing by:



www.oceaninvestments.com

toll free: 800-458-7890

local: 843-390-8900

All renderings, maps, landscaping, elevations, and plans are artist's conceptions. They are not to scale and are not guaranteed. The developer/builder reserves the right in its sole discretion to make changes or modifications to maps, plans, specifications, materials, features and colors without notice.



PLAN J

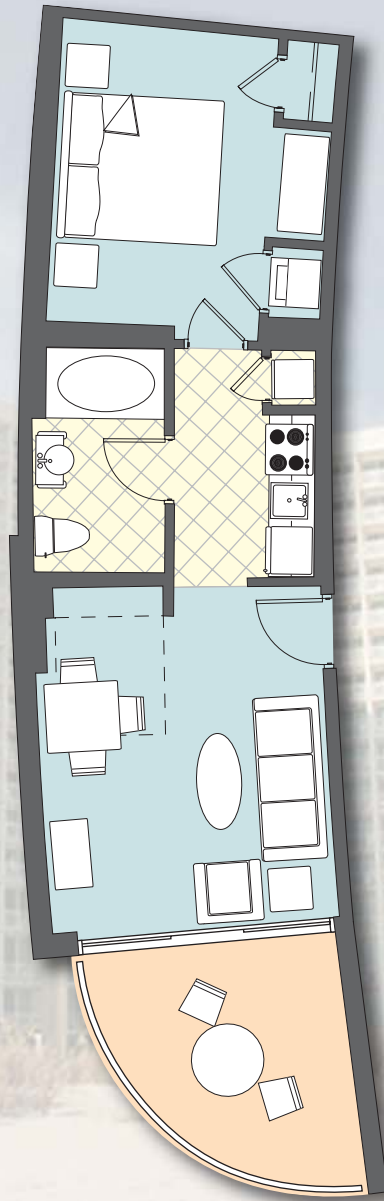
One Bedroom

Oceanview

497 Square Feet

102 Sq.Ft. Balcony

PHASE 1 PLAN
(PHASE 2 PLAN
IS REVERSED)



sales & marketing by:



www.oceaninvestments.com

toll free: 800-458-7890

local: 843-390-8900

All renderings, maps, landscaping, elevations, and plans are artist's conceptions. They are not to scale and are not guaranteed. The developer/builder reserves the right in its sole discretion to make changes or modifications to maps, plans, specifications, materials, features and colors without notice.



PLAN K

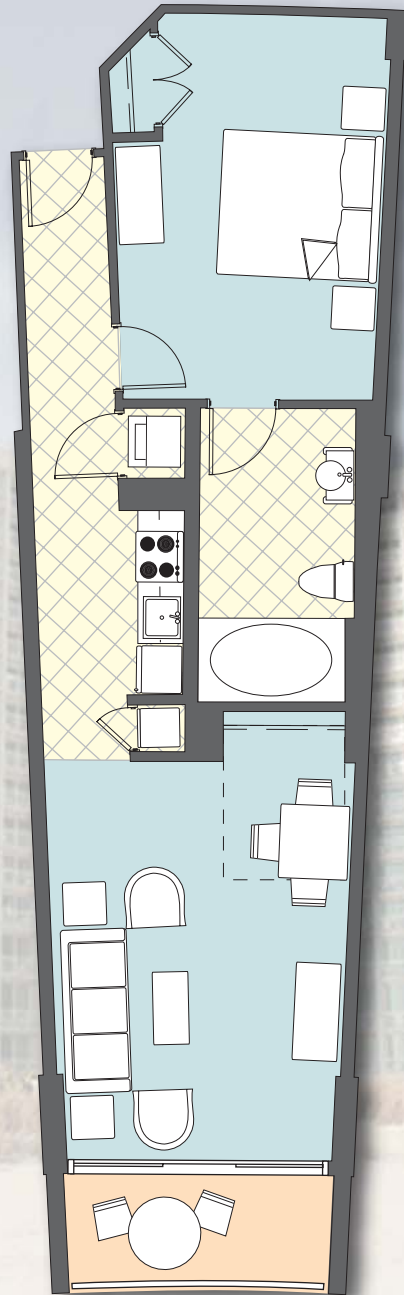
One Bedroom

Oceanfront

658 Square Feet

58 Sq.Ft. Balcony

PHASE 1 PLAN
(PHASE 2 PLAN
IS REVERSED)



sales & marketing by:



www.oceaninvestments.com

toll free: 800-458-7890

local: 843-390-8900

All renderings, maps, landscaping, elevations, and plans are artist's conceptions. They are not to scale and are not guaranteed. The developer/builder reserves the right in its sole discretion to make changes or modifications to maps, plans, specifications, materials, features and colors without notice.



Note: No balcony here on 5th floor.

PLAN L

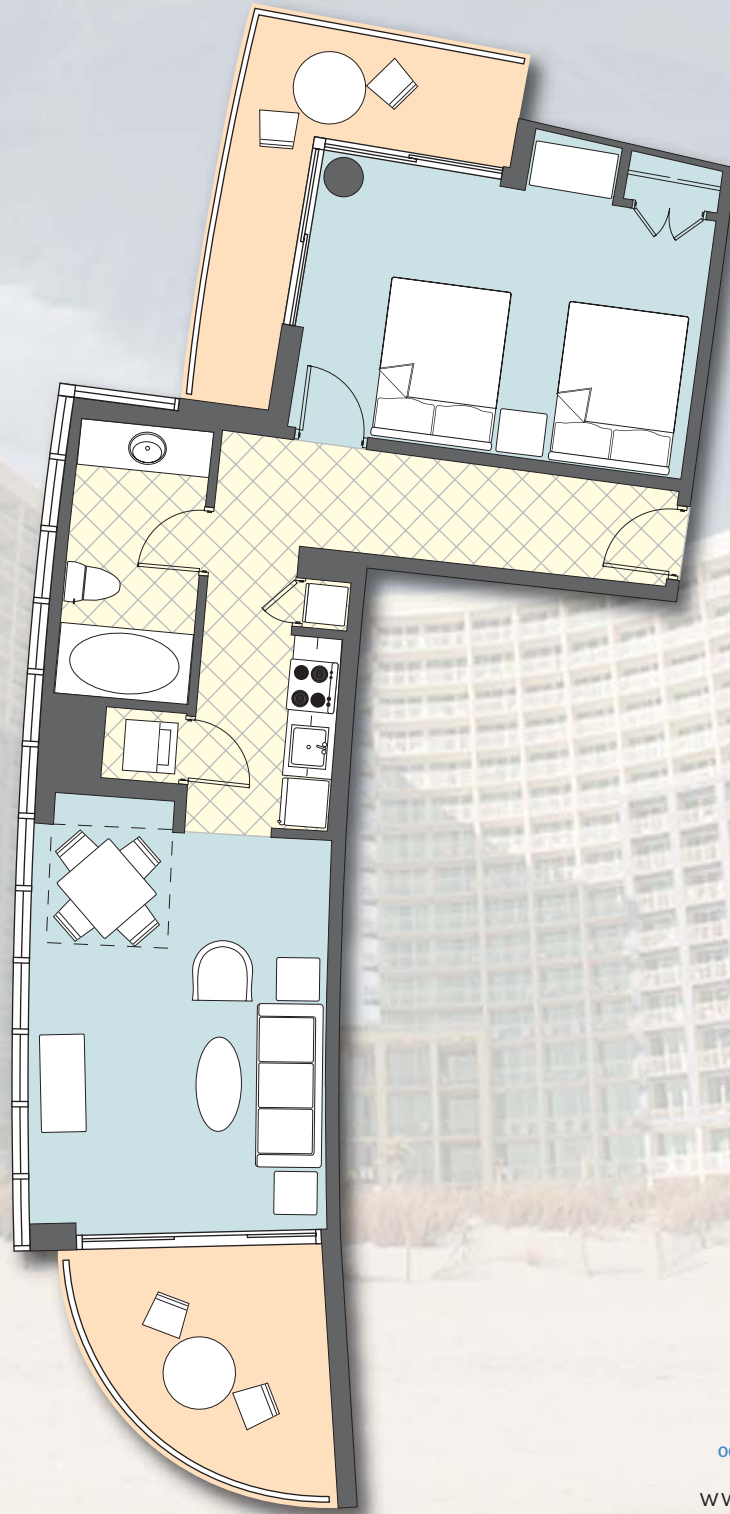
One Bedroom

Oceanview

750 Square Feet

205 Sq.Ft. Balcony

PHASE 1 PLAN
(PHASE 2 PLAN
IS REVERSED)



sales & marketing by:



www.oceaninvestments.com

toll free: 800-458-7890

local: 843-390-8900

All renderings, maps, landscaping, elevations, and plans are artist's conceptions. They are not to scale and are not guaranteed. The developer/builder reserves the right in its sole discretion to make changes or modifications to maps, plans, specifications, materials, features and colors without notice.