

Island Vista



The elegant new Island Vista condominium resort opened to purchasers and vacationers in May, 2006. The Boulevard photo (left) sets a dramatic tone; the oceanfront views (below) include the water amenities. The stylish lobby and dining room set the tone for gracious living.



Sales & Marketing By:



www.oceaninvestments.com
800-458-7890

OPENED MAY, 2006



Located at 6000 N. Ocean Boulevard in the heart of one of Myrtle Beach's most desired residential neighborhoods, the former Sea Island Inn is now open as a magnificent all-new condominium resort. Architecturally reminiscent of 1930s South Florida beach estates and enjoying over 400' of quiet Atlantic Ocean beach, the new *Island Vista* Resort features 149 oceanfront condominium units and includes on-site covered parking, climate-controlled enclosed interior corridors, and new water amenities including three pools, lazy river, spas and children's area.

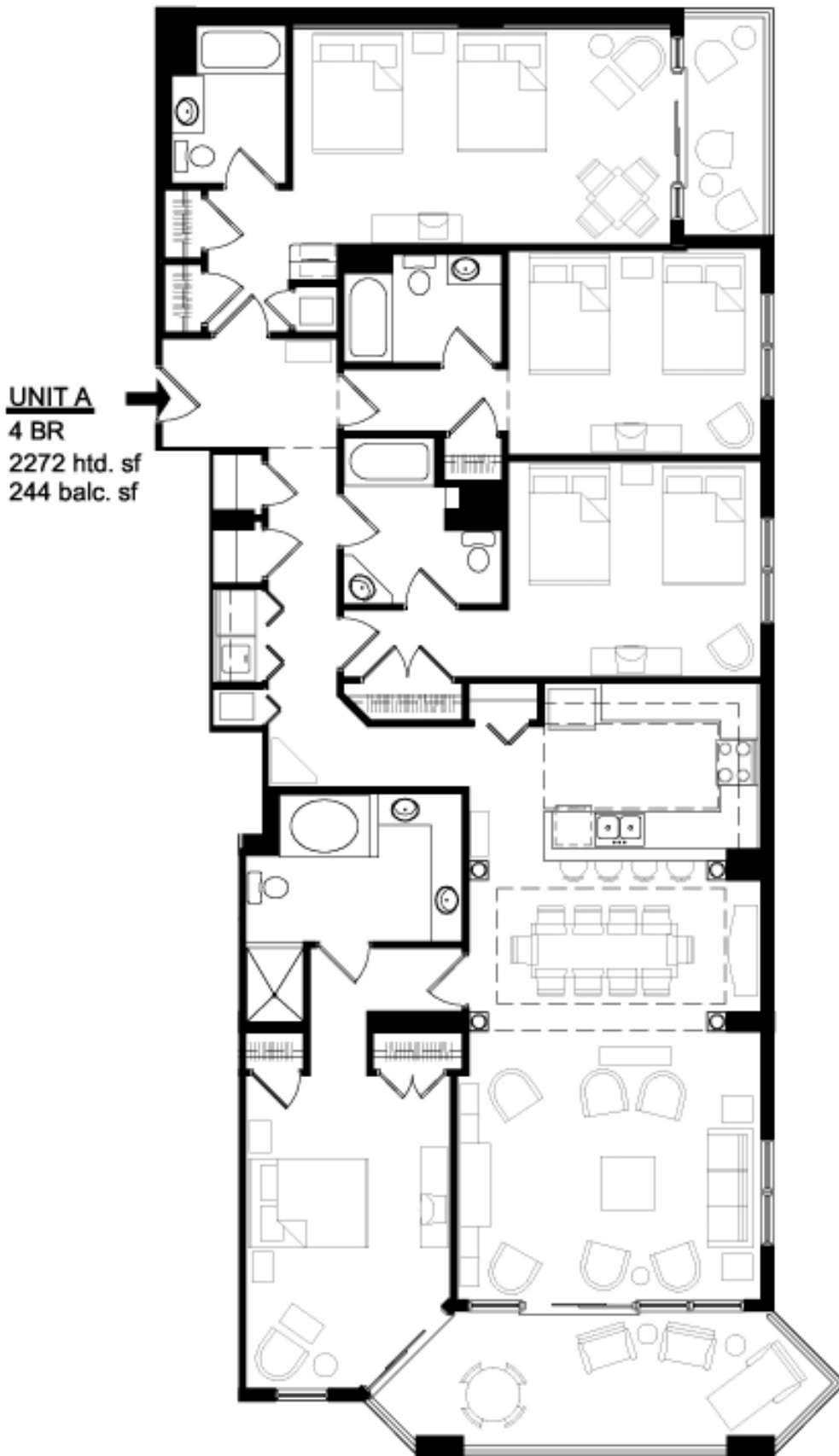
Available in spacious one, two, three and four bedroom styles, each unit is fully furnished and accessorized in an upscale designer fashion influenced by the tropical elegance of the British West Indies. Unit features include extra wide 14-15' bay(s), direct oceanfront balcony with spectacular views, owner's closet, fully equipped kitchens, granite kitchen and bath counter tops, tiled entry, kitchen, baths, and luxurious carpeting throughout the living and bedroom areas, washer and dryer, and high-speed internet access. With all these benefits, demand for *The Island* (as it was marketed in pre-construction) was overwhelming resulting in the project being completely reserved in a matter of days during the initial release!

When operating as Sea Island Inn, it was the only hotel in the area to offer package rates including breakfast and dinner to its guests. This built an over -25-year tradition of excellent service and wonderful meals that created a huge family of guests who returned year after year. With the luxurious new resort now open, the previous owners have returned to continue this relationship, adding first class accommodations to its award-winning service and promising a family vacation destination second to none!

Call The Hoffman Group today to learn how to become an owner in this exceptional oceanfront resort!



➤ Site plan rendering is for conceptual use only. Developer reserves right to make any necessary changes



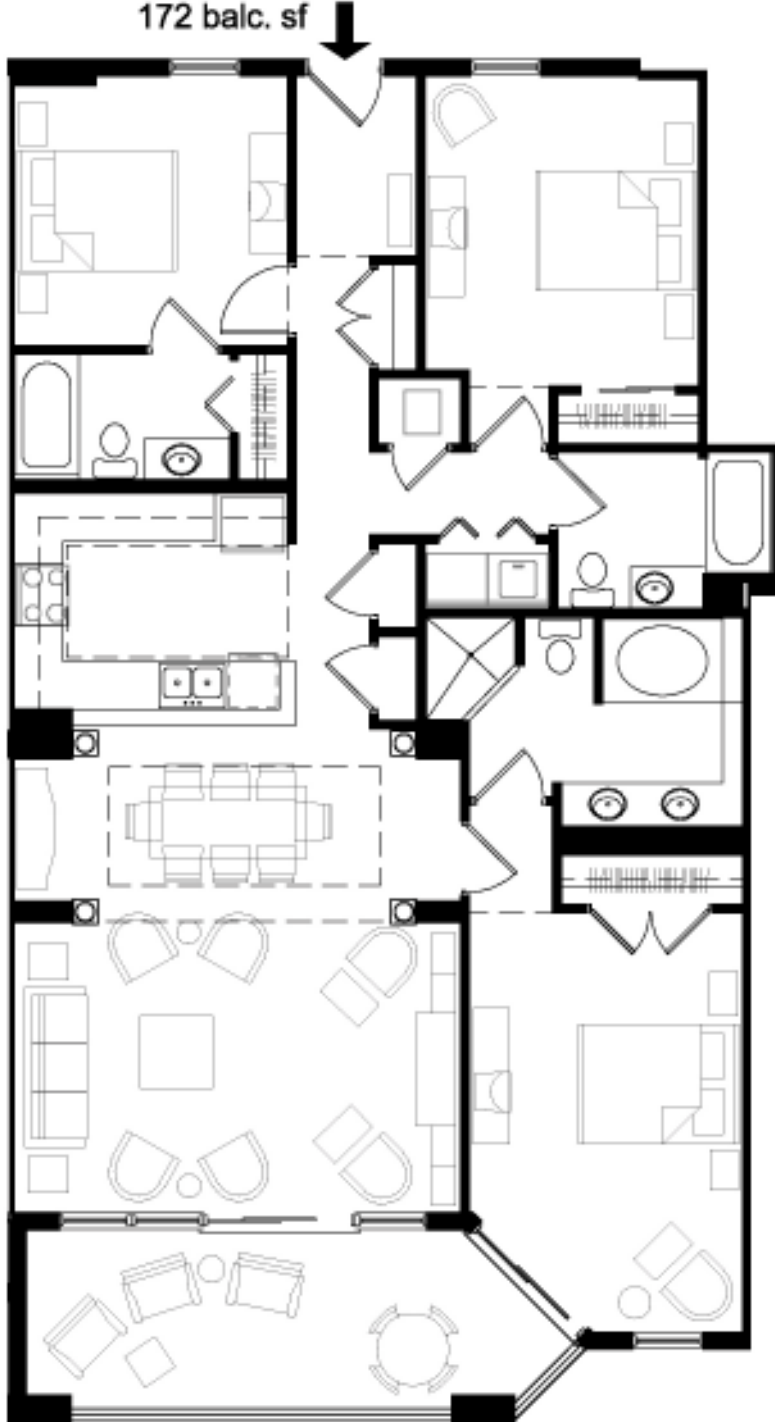
NOTE: All renderings, maps, landscaping, elevations, and plans are artist's conceptions and are not to scale. The developer/builder reserves the right in its sole discretion to make changes or modifications to maps, plans, specifications, materials, features and colors without notice.

UNIT B

3 BR

1516 htd. sf

172 balc. sf

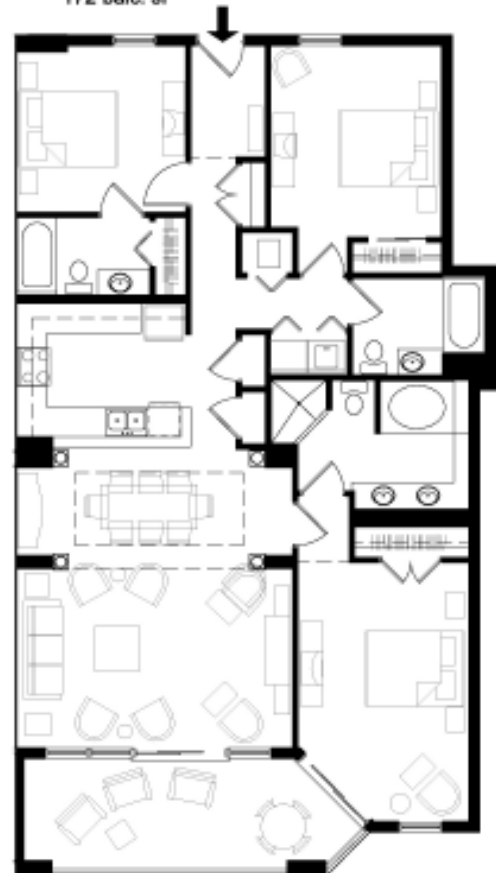


UNIT B1

3 BR

1555 htd. sf

172 balc. sf



NOTE: All renderings, maps, landscaping, elevations, and plans are artist's conceptions and are not to scale. The developer/builder reserves the right in its sole discretion to make changes or modifications to maps, plans, specifications, materials, features and colors without notice.

UNIT C

1 BR
813 htd. sf
81 balc. sf



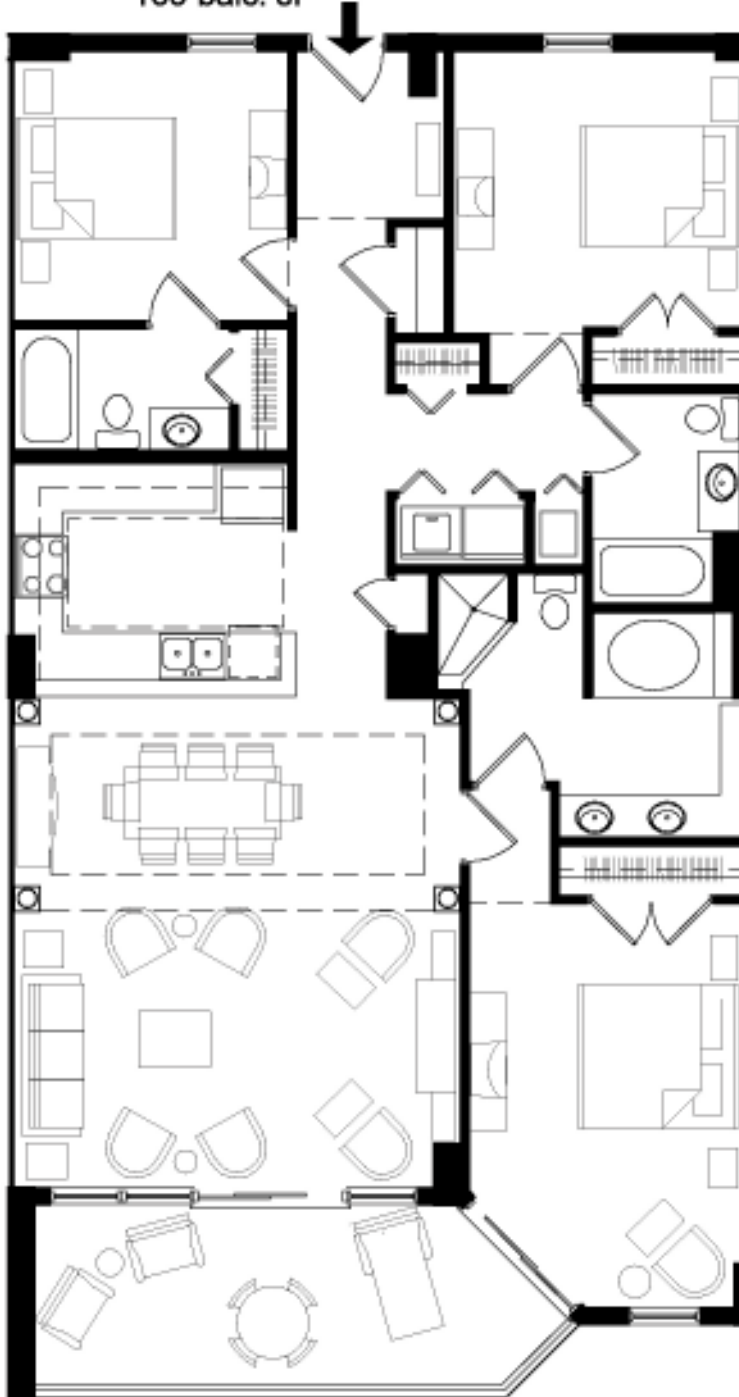
UNIT C1r

1 BR
822 htd. sf
81 balc. sf



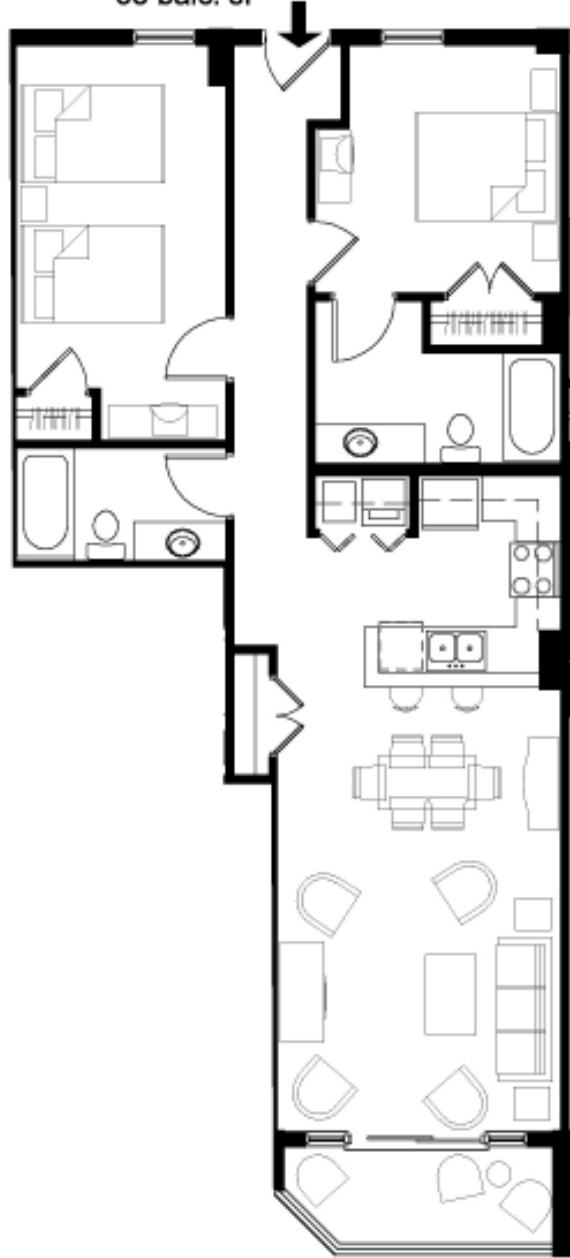
NOTE: All renderings, maps, landscaping, elevations, and plans are artist's conceptions and are not to scale. The developer/builder reserves the right in its sole discretion to make changes or modifications to maps, plans, specifications, materials, features and colors without notice.

UNIT D
3 BR
1540 htd. sf
169 balc. sf

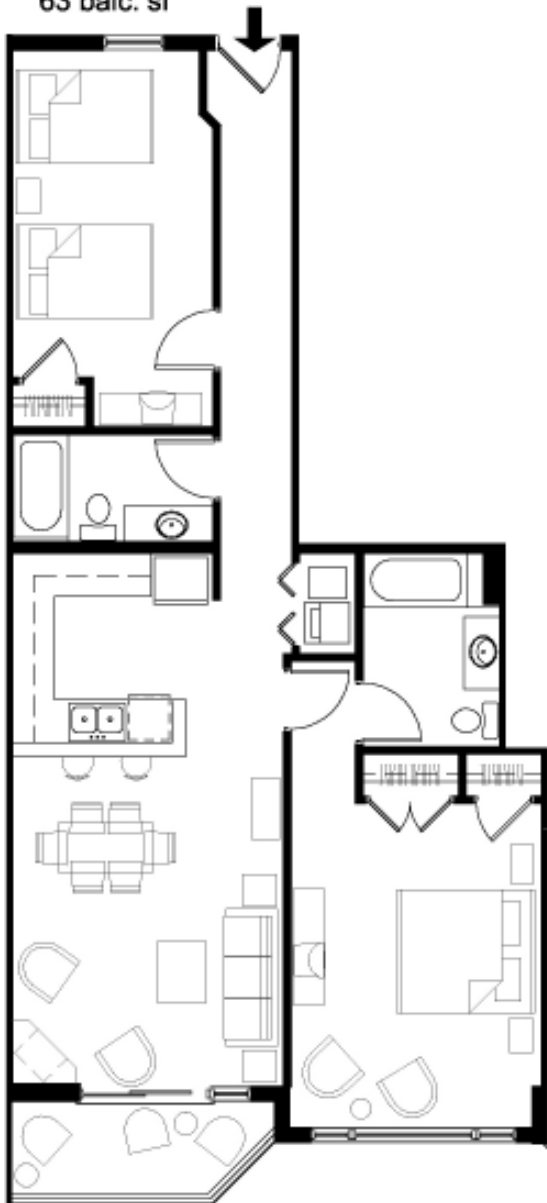


NOTE: All renderings, maps, landscaping, elevations, and plans are artist's conceptions and are not to scale. The developer/builder reserves the right in its sole discretion to make changes or modifications to maps, plans, specifications, materials, features and colors without notice.

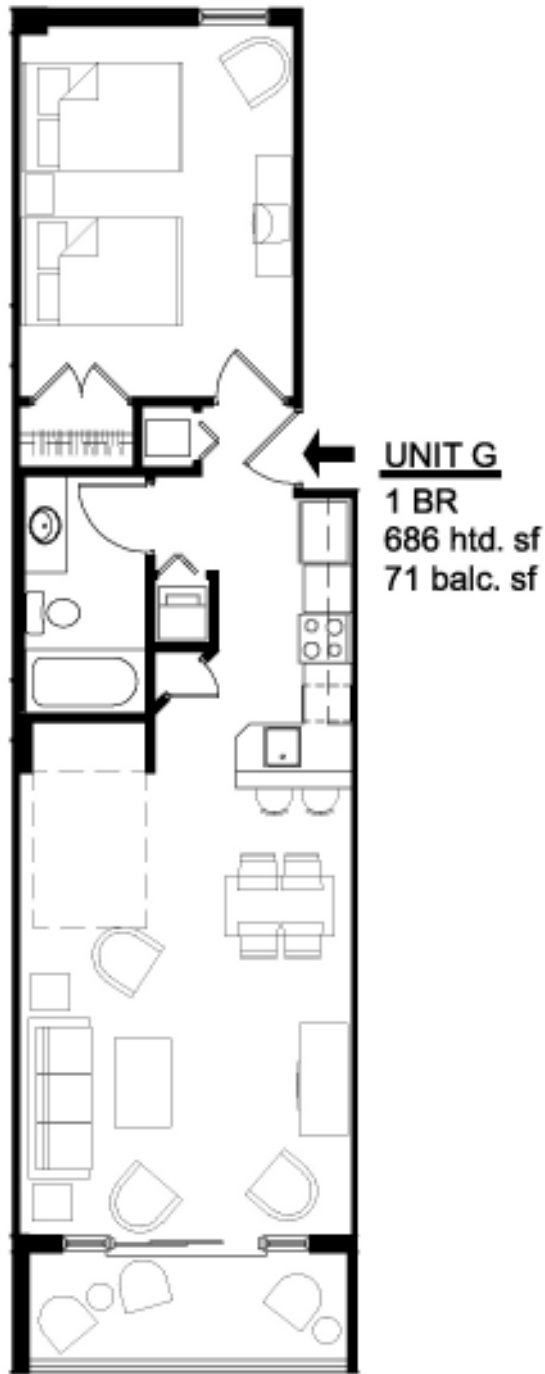
UNIT F
2 BR
1019 htd. sf
63 balc. sf



UNIT E
2 BR
1045 htd. sf
63 balc. sf



NOTE: All renderings, maps, landscaping, elevations, and plans are artist's conceptions and are not to scale. The developer/builder reserves the right in its sole discretion to make changes or modifications to maps, plans, specifications, materials, features and colors without notice.



NOTE: All renderings, maps, landscaping, elevations, and plans are artist's conceptions and are not to scale. The developer/builder reserves the right in its sole discretion to make changes or modifications to maps, plans, specifications, materials, features and colors without notice.

UNIT H2

4 BR

1990 htd. sf (incl.
lock-out H1)

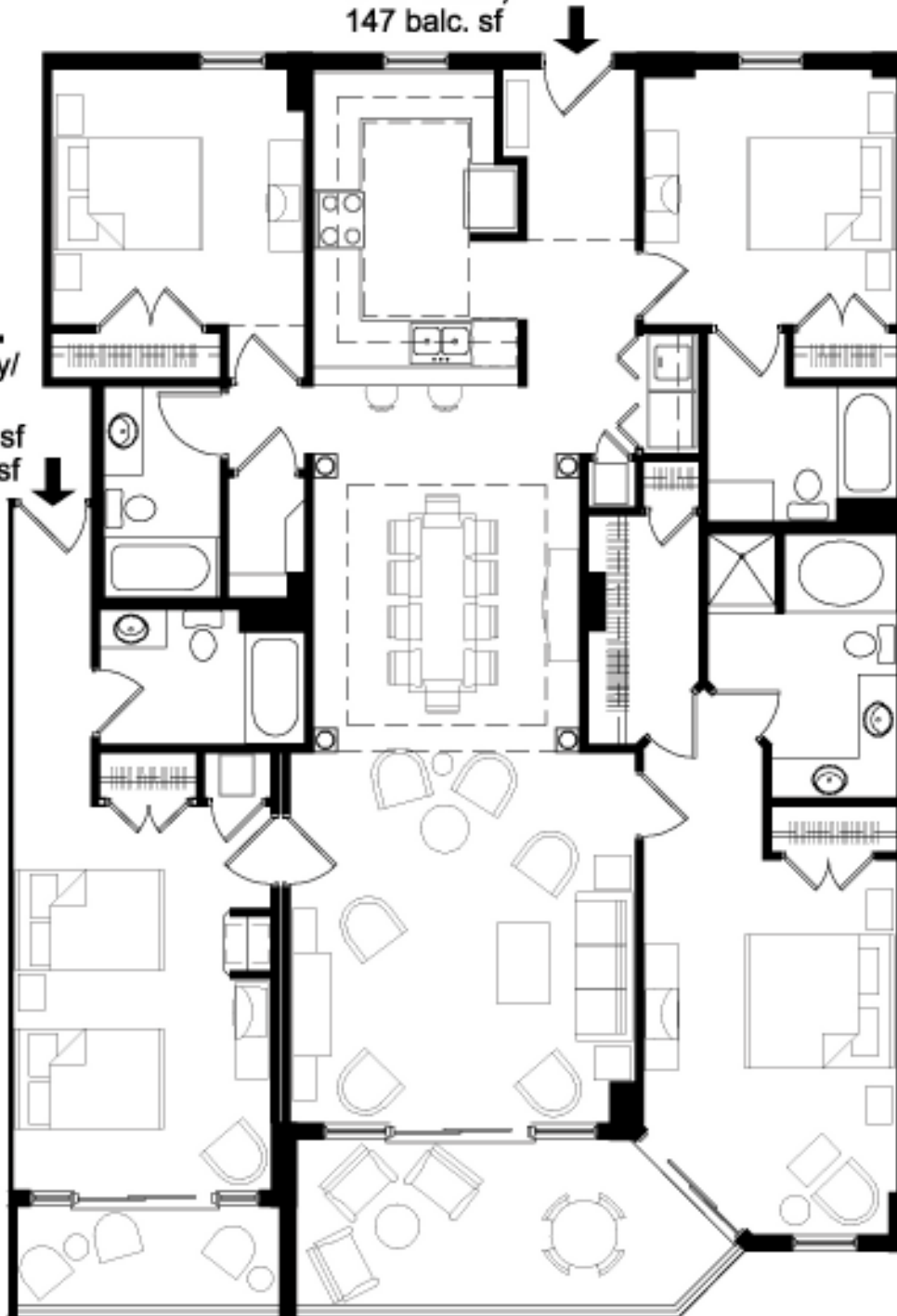
147 balc. sf

UNIT H1

Efficiency/
lock-out

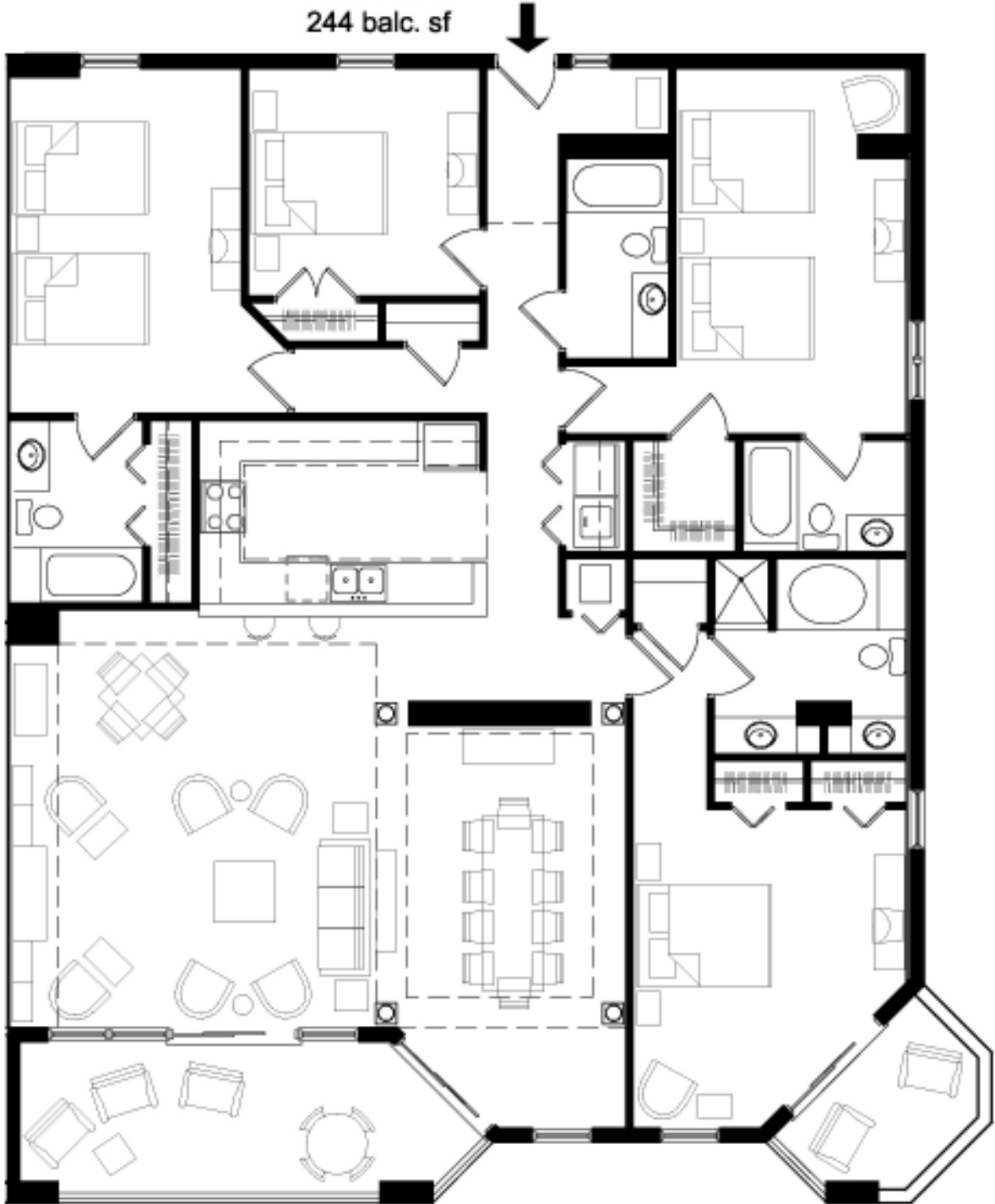
353 htd. sf

62 balc. sf



NOTE: All renderings, maps, landscaping, elevations, and plans are artist's conceptions and are not to scale. The developer/builder reserves the right in its sole discretion to make changes or modifications to maps, plans, specifications, materials, features and colors without notice.

UNIT I
4 BR
2287 htd. sf
244 balc. sf



NOTE: All renderings, maps, landscaping, elevations, and plans are artist's conceptions and are not to scale. The developer/builder reserves the right in its sole discretion to make changes or modifications to maps, plans, specifications, materials, features and colors without notice.